

Product datasheet for **TA340408**

STOML3 Rabbit Polyclonal Antibody

Product data:

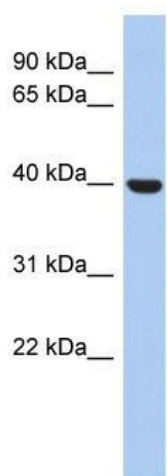
| | |
|-------------------------|---------------------------------------------------------------------------------------------------------------------------------------------------------------------------------------------------------------------------|
| Product Type: | Primary Antibodies |
| Applications: | WB |
| Recommended Dilution: | WB |
| Reactivity: | Human |
| Host: | Rabbit |
| Isotype: | IgG |
| Clonality: | Polyclonal |
| Immunogen: | The immunogen for anti-STOML3 antibody: synthetic peptide directed towards the N terminal of human STOML3. Synthetic peptide located within the following region: SFLLVIIITFPISIWMLKIIKEYERAVVFR LGRIQADKAKGPGLILVLP C |
| Formulation: | Liquid. Purified antibody supplied in 1x PBS buffer with 0.09% (w/v) sodium azide and 2% sucrose. <i>Note that this product is shipped as lyophilized powder to China customers.</i> |
| Concentration: | lot specific |
| Purification: | Affinity Purified |
| Conjugation: | Unconjugated |
| Storage: | Store at -20°C as received. |
| Stability: | Stable for 12 months from date of receipt. |
| Predicted Protein Size: | 32 kDa |
| Gene Name: | stomatin like 3 |
| Database Link: | NP_660329 Entrez Gene 161003 Human Q8TAV4 |
| Background: | The specific function of the protein remains unknown. |
| Synonyms: | Epb7.2l; SRO |
| Note: | Immunogen Sequence Homology: Pig: 100%; Rat: 100%; Horse: 100%; Human: 100%; Mouse: 100%; Bovine: 100%; Rabbit: 100%; Guinea pig: 100%; Dog: 93% |



[View online »](#)

Protein Families: Transmembrane

Product images:



WB Suggested Anti-STOML3 Antibody Titration:
0.2-1 ug/ml; ELISA Titer: 1: 312500; Positive
Control: 721_B cell lysate