

Product datasheet for **TA340407**

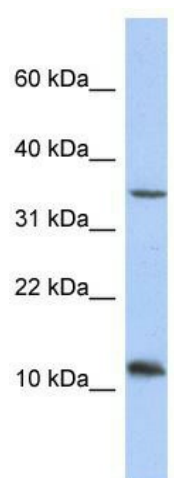
NXNL2 Rabbit Polyclonal Antibody

Product data:

Product Type:	Primary Antibodies
Applications:	WB
Recommended Dilution:	WB
Reactivity:	Human
Host:	Rabbit
Isotype:	IgG
Clonality:	Polyclonal
Immunogen:	The immunogen for anti-NXNL2 antibody: synthetic peptide directed towards the middle region of human NXNL2. Synthetic peptide located within the following region: SADGSCQEMLDPMRELHGAWLALPFHDPYRQRSLALLPRLECSGVILAHC
Formulation:	Liquid. Purified antibody supplied in 1x PBS buffer with 0.09% (w/v) sodium azide and 2% sucrose. <i>Note that this product is shipped as lyophilized powder to China customers.</i>
Concentration:	lot specific
Purification:	Affinity Purified
Conjugation:	Unconjugated
Storage:	Store at -20°C as received.
Stability:	Stable for 12 months from date of receipt.
Predicted Protein Size:	15 kDa
Gene Name:	nucleoredoxin-like 2
Database Link:	NP_660326 Entrez Gene 158046 Human Q5VZ03
Background:	The specific function of the protein remains unknown.
Synonyms:	C9orf121; RDCVF2
Note:	Immunogen Sequence Homology: Human: 100%; Mouse: 100%; Rat: 92%; Horse: 90%; Bovine: 90%; Rabbit: 90%; Pig: 80%



[View online »](#)

Product images:

WB Suggested Anti-NXNL2 Antibody Titration:
0.2-1 ug/ml; ELISA Titer: 1: 312500; Positive
Control: Jurkat cell lysate