

## Product datasheet for **TA340406**

### SLC25A48 Rabbit Polyclonal Antibody

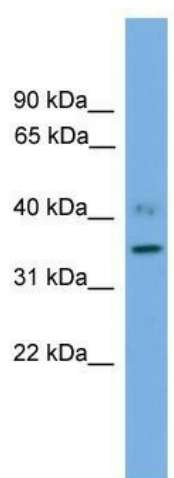
#### Product data:

Product Type:	Primary Antibodies
Applications:	WB
Recommended Dilution:	WB
Reactivity:	Human
Host:	Rabbit
Isotype:	IgG
Clonality:	Polyclonal
Immunogen:	The immunogen for anti-SLC25A48 antibody: synthetic peptide directed towards the c terminal of human LOC153328. Synthetic peptide located within the following region: TAVGQLGNCHALLSPGGGQDTFRYSPNNSLLGTYSVPGPLPPQSHPPMQ
Formulation:	Liquid. Purified antibody supplied in 1x PBS buffer with 0.09% (w/v) sodium azide and 2% sucrose. <i>Note that this product is shipped as lyophilized powder to China customers.</i>
Concentration:	lot specific
Purification:	Affinity Purified
Conjugation:	Unconjugated
Storage:	Store at -20°C as received.
Stability:	Stable for 12 months from date of receipt.
Predicted Protein Size:	31 kDa
Gene Name:	solute carrier family 25 member 48
Database Link:	<a href="#">NP_660325</a> <a href="#">Entrez Gene 153328 Human</a> <a href="#">Q6ZT89</a>
Background:	The function of this protein remains unknown.
Synonyms:	HDMCP
Note:	Immunogen Sequence Homology: Human: 100%



[View online »](#)

## Product images:



WB Suggested Anti-SLC25A48 Antibody Titration:  
0.2-1 ug/ml; ELISA Titer: 1: 1562500; Positive  
Control: Human Muscle