

## Product datasheet for **TA340405**

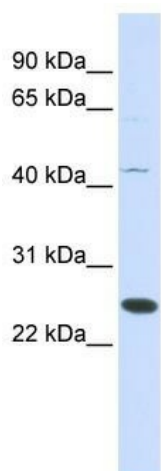
### **FAM119A (METTL21A) Rabbit Polyclonal Antibody**

#### **Product data:**

<b>Product Type:</b>	Primary Antibodies
<b>Applications:</b>	WB
<b>Recommended Dilution:</b>	WB
<b>Reactivity:</b>	Human
<b>Host:</b>	Rabbit
<b>Isotype:</b>	IgG
<b>Clonality:</b>	Polyclonal
<b>Immunogen:</b>	The immunogen for anti-METTL21A antibody: synthetic peptide directed towards the middle region of human METTL21A. Synthetic peptide located within the following region: LGAGTGLVGIVAALLGAHVITITDRKVALEFLKSNVQANLPPHIQTKTVVK
<b>Formulation:</b>	Liquid. Purified antibody supplied in 1x PBS buffer with 0.09% (w/v) sodium azide and 2% sucrose.
<b>Concentration:</b>	lot specific
<b>Purification:</b>	Affinity Purified
<b>Conjugation:</b>	Unconjugated
<b>Storage:</b>	Store at -20°C as received.
<b>Stability:</b>	Stable for 12 months from date of receipt.
<b>Predicted Protein Size:</b>	24 kDa
<b>Gene Name:</b>	methyltransferase like 21A
<b>Database Link:</b>	<a href="#">NP_660323</a> <a href="#">Entrez Gene 151194 Human</a> <a href="#">Q8WXB1</a>
<b>Background:</b>	METTL21A is a multi-pass membrane protein. It belongs to the FAM119 family. The function of the METTL21A protein remains unknown.
<b>Synonyms:</b>	FAM119A; HCA557b; HSPA-KMT
<b>Note:</b>	Immunogen Sequence Homology: Dog: 100%; Pig: 100%; Rat: 100%; Human: 100%; Mouse: 100%; Bovine: 100%; Rabbit: 100%; Horse: 93%; Guinea pig: 86%



[View online »](#)

**Product images:**

WB Suggested Anti-METTL21A Antibody Titration:  
0.2-1 ug/ml; ELISA Titer: 1: 312500; Positive  
Control: Human Liver