

Product datasheet for **TA340404**

FAM119A (METTL21A) Rabbit Polyclonal Antibody

Product data:

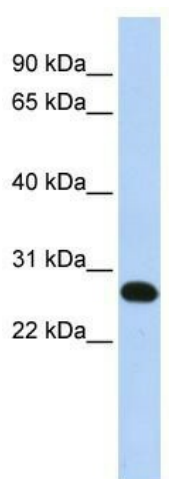
Product Type:	Primary Antibodies
Applications:	WB
Recommended Dilution:	WB
Reactivity:	Human
Host:	Rabbit
Isotype:	IgG
Clonality:	Polyclonal
Immunogen:	The immunogen for anti-METTL21A antibody: synthetic peptide directed towards the N terminal of human METTL21A. Synthetic peptide located within the following region: ALVPYEETTEFGLQKFKPLATFSFANHTIQIRQDWRHLGVAAVWDAAI
Formulation:	Liquid. Purified antibody supplied in 1x PBS buffer with 0.09% (w/v) sodium azide and 2% sucrose. <i>Note that this product is shipped as lyophilized powder to China customers.</i>
Concentration:	lot specific
Purification:	Affinity Purified
Conjugation:	Unconjugated
Storage:	Store at -20°C as received.
Stability:	Stable for 12 months from date of receipt.
Predicted Protein Size:	24 kDa
Gene Name:	methyltransferase like 21A
Database Link:	NP_660323 Entrez Gene 151194 Human Q8WXB1
Background:	METTL21A is a multi-pass membrane protein. It belongs to the FAM119 family. The function of the METTL21A protein remains unknown.
Synonyms:	FAM119A; HCA557b; HSPA-KMT



[View online »](#)

Note: Immunogen Sequence Homology: Dog: 100%; Pig: 100%; Human: 100%; Mouse: 100%; Rabbit: 100%; Guinea pig: 100%; Rat: 93%; Bovine: 93%; Horse: 86%

Product images:



WB Suggested Anti-METTL21A Antibody Titration:
0.2-1 ug/ml; ELISA Titer: 1: 62500; Positive
Control: Human brain