

## Product datasheet for **TA340403**

### CCDC127 Rabbit Polyclonal Antibody

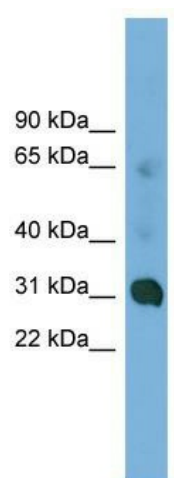
#### Product data:

Product Type:	Primary Antibodies
Applications:	WB
Recommended Dilution:	WB
Reactivity:	Human
Host:	Rabbit
Isotype:	IgG
Clonality:	Polyclonal
Immunogen:	The immunogen for anti-CCDC127 antibody: synthetic peptide directed towards the N terminal of human CCDC127. Synthetic peptide located within the following region: LGLAAFRWIWSRESQKEVEKEREAYRRRTAAAFQDLEAKYHAMISENRRRA
Formulation:	Liquid. Purified antibody supplied in 1x PBS buffer with 0.09% (w/v) sodium azide and 2% sucrose. <i>Note that this product is shipped as lyophilized powder to China customers.</i>
Concentration:	lot specific
Purification:	Affinity Purified
Conjugation:	Unconjugated
Storage:	Store at -20°C as received.
Stability:	Stable for 12 months from date of receipt.
Predicted Protein Size:	31
Gene Name:	coiled-coil domain containing 127
Database Link:	<a href="#">NP_660308</a> <a href="#">Entrez Gene 133957 Human</a> <a href="#">Q96BQ5</a>
Background:	The function of this protein remains unknown.
Synonyms:	FLJ25701
Note:	Immunogen Sequence Homology: Rat: 100%; Horse: 100%; Human: 100%; Mouse: 100%; Dog: 93%; Rabbit: 93%; Pig: 86%; Bovine: 86%; Guinea pig: 79%



[View online »](#)

## Product images:



WB Suggested Anti-CCDC127 Antibody Titration:  
0.2-1 ug/ml; Positive Control: COLO205 cell lysate