

## Product datasheet for **TA340399**

### LRRC25 Rabbit Polyclonal Antibody

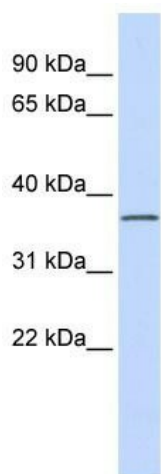
#### Product data:

Product Type:	Primary Antibodies
Applications:	WB
Recommended Dilution:	WB
Reactivity:	Human
Host:	Rabbit
Isotype:	IgG
Clonality:	Polyclonal
Immunogen:	The immunogen for anti-LRRC25 antibody: synthetic peptide directed towards the N terminal of human LRRC25. Synthetic peptide located within the following region: AEFSATCLNFSGLSLSLPHNQSLRASNVILLDLSGNGLRELPVTFFAHLQ
Formulation:	Liquid. Purified antibody supplied in 1x PBS buffer with 0.09% (w/v) sodium azide and 2% sucrose. <i>Note that this product is shipped as lyophilized powder to China customers.</i>
Concentration:	lot specific
Purification:	Affinity Purified
Conjugation:	Unconjugated
Storage:	Store at -20°C as received.
Stability:	Stable for 12 months from date of receipt.
Predicted Protein Size:	33 kDa
Gene Name:	leucine rich repeat containing 25
Database Link:	<a href="#">NP_660299</a> <a href="#">Entrez Gene 126364 Human</a> <a href="#">Q8N386</a>
Background:	LRRC25 is a single-pass type I membrane protein. It contains 2 LRR (leucine-rich) repeats. LRRC25 may be involved in the activation of cells of innate and acquired immunity.
Synonyms:	MAPA
Note:	Immunogen Sequence Homology: Human: 100%



[View online »](#)

Protein Families: Transmembrane

**Product images:**

WB Suggested Anti-LRRC25 Antibody Titration:  
0.2-1 ug/ml; ELISA Titer: 1: 62500; Positive  
Control: Human brain