

Product datasheet for **TA340397**

RNASE11 Rabbit Polyclonal Antibody

Product data:

Product Type:	Primary Antibodies
Applications:	WB
Recommended Dilution:	WB
Reactivity:	Human
Host:	Rabbit
Isotype:	IgG
Clonality:	Polyclonal
Immunogen:	The immunogen for anti-RNASE11 antibody: synthetic peptide directed towards the middle region of human RNASE11. Synthetic peptide located within the following region: GISCCESLELENTVCQFTTGKQFPRCQYHSVTSLEKILTVLTGHSLMSWL
Formulation:	Liquid. Purified antibody supplied in 1x PBS buffer with 0.09% (w/v) sodium azide and 2% sucrose. <i>Note that this product is shipped as lyophilized powder to China customers.</i>
Concentration:	lot specific
Purification:	Affinity Purified
Conjugation:	Unconjugated
Storage:	Store at -20°C as received.
Stability:	Stable for 12 months from date of receipt.
Predicted Protein Size:	22 kDa
Gene Name:	ribonuclease A family member 11 (inactive)
Database Link:	NP_660293 Entrez Gene 122651 Human Q8TAA1
Background:	RNASE11 belongs to the pancreatic ribonuclease family. The function of RNASE11 remains unknown.
Synonyms:	C14orf6; HEL-S-84p; RAJ1

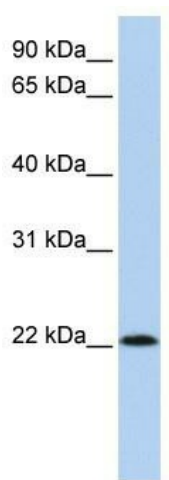


[View online »](#)

Note: Immunogen Sequence Homology: Human: 100%; Horse: 92%; Pig: 83%; Rabbit: 83%; Guinea pig: 83%

Protein Families: Secreted Protein

Product images:



WB Suggested Anti-RNASE11 Antibody Titration:
0.2-1 ug/ml; ELISA Titer: 1: 62500; Positive
Control: 293T cell lysate