

Product datasheet for **TA340396**

DDIT4L Rabbit Polyclonal Antibody

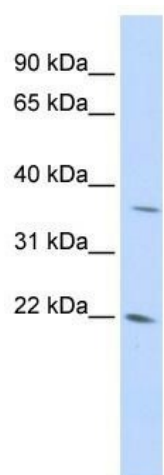
Product data:

Product Type:	Primary Antibodies
Applications:	WB
Recommended Dilution:	WB
Reactivity:	Human
Host:	Rabbit
Isotype:	IgG
Clonality:	Polyclonal
Immunogen:	The immunogen for anti-DDIT4L antibody: synthetic peptide directed towards the middle region of human DDIT4L. Synthetic peptide located within the following region: KLGCSKVLVPEKLTQRIAQDVLRLSSTPCGLRGCVMHVNLEIENVCKKL
Formulation:	Liquid. Purified antibody supplied in 1x PBS buffer with 0.09% (w/v) sodium azide and 2% sucrose.
Concentration:	lot specific
Purification:	Affinity Purified
Conjugation:	Unconjugated
Storage:	Store at -20°C as received.
Stability:	Stable for 12 months from date of receipt.
Predicted Protein Size:	22 kDa
Gene Name:	DNA damage inducible transcript 4 like
Database Link:	NP_660287 Entrez Gene 115265 Human Q96D03
Background:	DDIT4L inhibits cell growth by regulating the FRAP1 pathway upstream of the TSC1-TSC2 complex and downstream of AKT1.
Synonyms:	REDD2; Rtp801L
Note:	Immunogen Sequence Homology: Dog: 100%; Pig: 100%; Rat: 100%; Horse: 100%; Human: 100%; Mouse: 100%; Bovine: 100%; Rabbit: 100%; Guinea pig: 100%



[View online »](#)

Product images:



WB Suggested Anti-DDIT4L Antibody Titration:
0.2-1 ug/ml; ELISA Titer: 1: 12500; Positive
Control: 293T cell lysate