

## Product datasheet for **TA340395**

### OMA1 Rabbit Polyclonal Antibody

#### Product data:

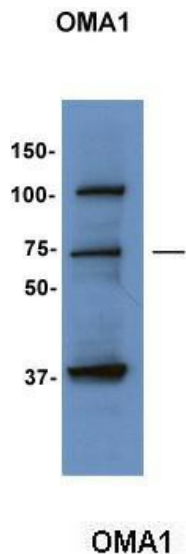
Product Type:	Primary Antibodies
Applications:	WB
Recommended Dilution:	WB
Reactivity:	Human, Fish
Host:	Rabbit
Isotype:	IgG
Clonality:	Polyclonal
Immunogen:	The immunogen for anti-OMA1 antibody: synthetic peptide directed towards the middle region of human OMA1. Synthetic peptide located within the following region: WAICPRDSLALLCQWIQSKLQEYMFNRPYSRKLEAEADKIGLLLAAKACA
Formulation:	Liquid. Purified antibody supplied in 1x PBS buffer with 0.09% (w/v) sodium azide and 2% sucrose. <i>Note that this product is shipped as lyophilized powder to China customers.</i>
Concentration:	lot specific
Purification:	Affinity Purified
Conjugation:	Unconjugated
Storage:	Store at -20°C as received.
Stability:	Stable for 12 months from date of receipt.
Predicted Protein Size:	60
Gene Name:	OMA1 zinc metallopeptidase
Database Link:	<a href="#">NP_660286</a> <a href="#">Entrez Gene 115209 Human</a> <a href="#">Q96E52</a>
Background:	OMA1 is a mitochondrial protease.
Synonyms:	2010001O09Rik; DAB1; MPRP-1; peptidase; YKR087C; ZMPOMA1
Note:	Immunogen Sequence Homology: Human: 100%; Dog: 86%; Pig: 86%; Rat: 86%; Horse: 86%; Mouse: 86%; Rabbit: 86%; Bovine: 85%; Zebrafish: 85%; Yeast: 83%; Guinea pig: 79%



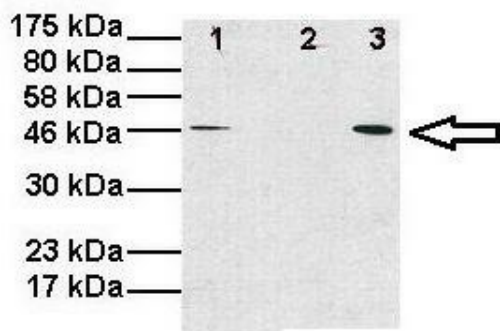
[View online »](#)

Protein Families: Druggable Genome, Protease, Transmembrane

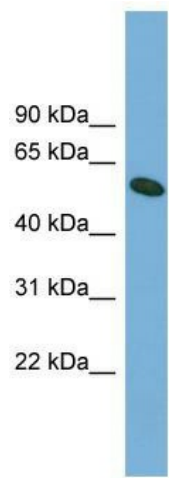
**Product images:**



Sample Type: HepG2 cells; Primary Dilution: 1: 1000; Secondary Antibody: anti-Rabbit TBST with 5% BSA; Secondary Dilution: 1: 5000; Image Submitted by: Hana Sabic; University of Utah; 1/2



Lanes: Lane 1: 10ug human fibroblast mitochondria; Lane 2: 15ug fish embryo lysate; 6h post fertilization; Lane 3: 30ug fish embryo lysate, 6 days; Primary Antibody Dilution: 1: 1000; Secondary Antibody: Anti-Rabbit HRP; Secondary Antibody Dilution: 1: 5000;



WB Suggested Anti-OMA1 Antibody Titration: 0.2-1 ug/ml; Positive Control: 721\_B cell lysate