

Product datasheet for **TA340394**

SPATA5 Rabbit Polyclonal Antibody

Product data:

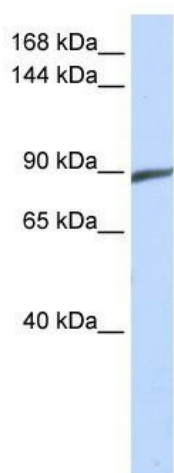
Product Type:	Primary Antibodies
Applications:	WB
Recommended Dilution:	WB
Reactivity:	Human
Host:	Rabbit
Isotype:	IgG
Clonality:	Polyclonal
Immunogen:	The immunogen for anti-SPATA5 antibody: synthetic peptide directed towards the middle region of human SPATA5. Synthetic peptide located within the following region: ALLALEEDIQANLIMKRHFTQALSTVTPRIPESLRRFYEDYQEKSGLHTL
Formulation:	Liquid. Purified antibody supplied in 1x PBS buffer with 0.09% (w/v) sodium azide and 2% sucrose. <i>Note that this product is shipped as lyophilized powder to China customers.</i>
Concentration:	lot specific
Purification:	Affinity Purified
Conjugation:	Unconjugated
Storage:	Store at -20°C as received.
Stability:	Stable for 12 months from date of receipt.
Predicted Protein Size:	98 kDa
Gene Name:	spermatogenesis associated 5
Database Link:	NP_660208 Entrez Gene 166378 Human Q8NB90
Background:	SPATA5 may be involved in morphological and functional mitochondrial transformations during spermatogenesis.
Synonyms:	AFG2; EHLMRS; SPAF



[View online »](#)

Note: Immunogen Sequence Homology: Pig: 100%; Rat: 100%; Human: 100%; Mouse: 100%; Horse: 93%; Rabbit: 93%; Guinea pig: 93%; Dog: 92%

Product images:



WB Suggested Anti-SPATA5 Antibody Titration:
0.2-1 ug/ml; ELISA Titer: 1: 62500; Positive
Control: 293T cell lysate