

## Product datasheet for **TA340393**

### VTI1A Rabbit Polyclonal Antibody

#### Product data:

Product Type:	Primary Antibodies
Applications:	WB
Recommended Dilution:	WB
Reactivity:	Human
Host:	Rabbit
Isotype:	IgG
Clonality:	Polyclonal
Immunogen:	The immunogen for anti-VTI1A antibody: synthetic peptide directed towards the N terminal of human VTI1A. Synthetic peptide located within the following region: SSDFEGYEQDFAVLTAEITSKIARVPRLPPDEKKQMVANVEKQLEEAKEL
Formulation:	Liquid. Purified antibody supplied in 1x PBS buffer with 0.09% (w/v) sodium azide and 2% sucrose. <i>Note that this product is shipped as lyophilized powder to China customers.</i>
Concentration:	lot specific
Purification:	Affinity Purified
Conjugation:	Unconjugated
Storage:	Store at -20°C as received.
Stability:	Stable for 12 months from date of receipt.
Predicted Protein Size:	25 kDa
Gene Name:	vesicle transport through interaction with t-SNAREs 1A
Database Link:	<a href="#">NP_660207</a> <a href="#">Entrez Gene 143187 Human</a> <a href="#">Q96A19</a>
Background:	VTI1A is a V-SNARE that mediates vesicle transport pathways through interactions with t-SNAREs on the target membrane. These interactions are proposed to mediate aspects of the specificity of vesicle trafficking and to promote fusion of the lipid bilayers. VTI1A may be concerned with increased secretion of cytokines associated with cellular senescence.
Synonyms:	MMDS3; MVti1; Vti1-rp2; VTI1RP2



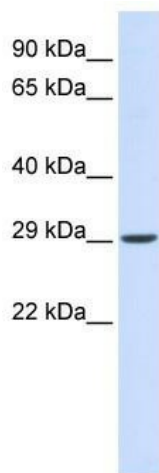
[View online »](#)

**Note:** Immunogen Sequence Homology: Dog: 100%; Pig: 100%; Horse: 100%; Human: 100%; Mouse: 100%; Bovine: 100%; Rabbit: 100%; Rat: 93%; Guinea pig: 93%

**Protein Families:** Transmembrane

**Protein Pathways:** SNARE interactions in vesicular transport

### Product images:



WB Suggested Anti-VTI1A Antibody Titration: 0.2-1 ug/ml; ELISA Titer: 1: 62500; Positive Control: Human Muscle