

## Product datasheet for **TA340392**

### CSNK1A1L Rabbit Polyclonal Antibody

#### Product data:

Product Type:	Primary Antibodies
Applications:	WB
Recommended Dilution:	WB
Reactivity:	Human
Host:	Rabbit
Isotype:	IgG
Clonality:	Polyclonal
Immunogen:	The immunogen for anti-CSNK1A1L antibody: synthetic peptide directed towards the middle region of human CSNK1A1L. Synthetic peptide located within the following region: TLNHQYDYTFDWTMLKQKAAQQAASSSGGQQQAQTQTGKQTEKNKNNVKD
Formulation:	Liquid. Purified antibody supplied in 1x PBS buffer with 0.09% (w/v) sodium azide and 2% sucrose. <i>Note that this product is shipped as lyophilized powder to China customers.</i>
Concentration:	lot specific
Purification:	Affinity Purified
Conjugation:	Unconjugated
Storage:	Store at -20°C as received.
Stability:	Stable for 12 months from date of receipt.
Predicted Protein Size:	39 kDa
Gene Name:	casein kinase 1 alpha 1 like
Database Link:	<a href="#">NP_660204</a> <a href="#">Entrez Gene 122011 Human Q8N752</a>
Background:	Casein kinases are operationally defined by their preferential utilization of acidic proteins such as caseins as substrates. It can phosphorylate a large number of proteins. CSNK1A1L participates in Wnt signaling.
Synonyms:	CK1



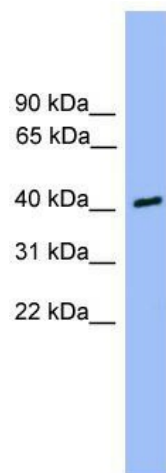
[View online »](#)

**Note:** Immunogen Sequence Homology: Human: 100%; Zebrafish: 79%; Dog: 77%; Pig: 77%; Rat: 77%; Horse: 77%; Mouse: 77%; Guinea pig: 77%

**Protein Families:** Druggable Genome, Protein Kinase

**Protein Pathways:** Hedgehog signaling pathway, Wnt signaling pathway

**Product images:**



WB Suggested Anti-CSNK1A1L Antibody Titration:  
0.2-1 ug/ml; ELISA Titer: 1: 62500; Positive  
Control: 721\_B cell lysate