

Product datasheet for **TA340391**

LRATD1 Rabbit Polyclonal Antibody

Product data:

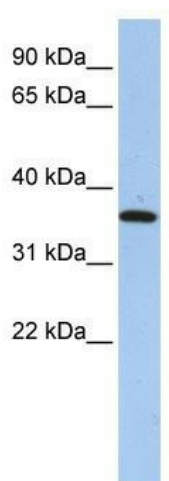
Product Type:	Primary Antibodies
Applications:	WB
Recommended Dilution:	WB
Reactivity:	Human
Host:	Rabbit
Isotype:	IgG
Clonality:	Polyclonal
Immunogen:	The immunogen for anti-FAM84A antibody: synthetic peptide directed towards the N terminal of human FAM84A. Synthetic peptide located within the following region: GNQLDRITHLNYSELPTGDPSGIEKDELRVGVAYFFSDDEEDLDERGQPD
Formulation:	Liquid. Purified antibody supplied in 1x PBS buffer with 0.09% (w/v) sodium azide and 2% sucrose. <i>Note that this product is shipped as lyophilized powder to China customers.</i>
Concentration:	lot specific
Purification:	Affinity Purified
Conjugation:	Unconjugated
Storage:	Store at -20°C as received.
Stability:	Stable for 12 months from date of receipt.
Predicted Protein Size:	32 kDa
Gene Name:	family with sequence similarity 84 member A
Database Link:	NP_660158 Entrez Gene 151354 Human Q96KN4
Background:	FAM84A belongs to the FAM84 family. Up-regulation of FAM84A may play a critical role in progression of colon cancer.
Synonyms:	NSE1; PP11517



[View online »](#)

Note: Immunogen Sequence Homology: Dog: 100%; Pig: 100%; Rat: 100%; Human: 100%; Mouse: 100%; Bovine: 100%; Rabbit: 100%; Zebrafish: 100%; Guinea pig: 100%

Product images:



WB Suggested Anti-FAM84A Antibody Titration:
0.2-1 ug/ml; ELISA Titer: 1: 62500; Positive
Control: HepG2 cell lysate