

Product datasheet for **TA340390**

DIRAS1 Rabbit Polyclonal Antibody

Product data:

Product Type:	Primary Antibodies
Applications:	WB
Recommended Dilution:	WB
Reactivity:	Human
Host:	Rabbit
Isotype:	IgG
Clonality:	Polyclonal
Immunogen:	The immunogen for anti-DIRAS1 antibody: synthetic peptide directed towards the middle region of human DIRAS1. Synthetic peptide located within the following region: KCAFME T SAKMNYNVKELFQELLTLETRRNMSLNIDGKRSGKQKRTDRVK
Formulation:	Liquid. Purified antibody supplied in 1x PBS buffer with 0.09% (w/v) sodium azide and 2% sucrose. <i>Note that this product is shipped as lyophilized powder to China customers.</i>
Concentration:	lot specific
Purification:	Affinity Purified
Conjugation:	Unconjugated
Storage:	Store at -20°C as received.
Stability:	Stable for 12 months from date of receipt.
Predicted Protein Size:	22 kDa
Gene Name:	DIRAS family GTPase 1
Database Link:	NP_660156 Entrez Gene 148252 Human O95057



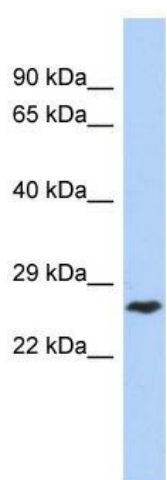
[View online »](#)

Background: DIRAS1 belongs to a distinct branch of the functionally diverse Ras superfamily of monomeric GTPases. DIRAS1 belongs to a distinct branch of the functionally diverse Ras (see HRAS; MIM 190020) superfamily of monomeric GTPases. [supplied by OMIM]. Sequence Note: removed 1 base from the 5' end that did not align to the reference genome assembly.
PRIMARYREFSEQ_SPAN PRIMARY_IDENTIFIER PRIMARY_SPAN COMP 1-3390 BC030660.1 2-3391

Synonyms: Di-Ras1; GBTS1; RIG

Note: Immunogen Sequence Homology: Human: 100%; Pig: 93%; Horse: 93%; Bovine: 93%; Zebrafish: 93%; Dog: 86%; Rat: 79%; Mouse: 79%

Product images:



WB Suggested Anti-DIRAS1 Antibody Titration:
0.2-1 ug/ml; ELISA Titer: 1: 62500; Positive
Control: Jurkat cell lysate