

## Product datasheet for **TA340384**

### UBQLNL Rabbit Polyclonal Antibody

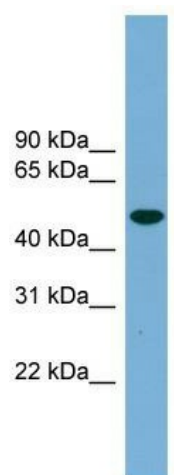
#### Product data:

Product Type:	Primary Antibodies
Applications:	WB
Recommended Dilution:	WB
Reactivity:	Human
Host:	Rabbit
Isotype:	IgG
Clonality:	Polyclonal
Immunogen:	The immunogen for anti-UBQLNL antibody: synthetic peptide directed towards the middle region of human UBQLNL. Synthetic peptide located within the following region: LTQHPATRVYIYNSSGGFSSNTSANDTLNKVNHTSKANTAMISTKGQSHIC
Formulation:	Liquid. Purified antibody supplied in 1x PBS buffer with 0.09% (w/v) sodium azide and 2% sucrose. <i>Note that this product is shipped as lyophilized powder to China customers.</i>
Concentration:	lot specific
Purification:	Affinity Purified
Conjugation:	Unconjugated
Storage:	Store at -20°C as received.
Stability:	Stable for 12 months from date of receipt.
Predicted Protein Size:	53
Gene Name:	ubiquilin-like
Database Link:	<a href="#">NP_659490</a> <a href="#">Entrez Gene 143630 Human</a> <a href="#">Q8IYU4</a>
Background:	The function of this protein remains unknown.
Synonyms:	MGC20470; MGC26958
Note:	Immunogen Sequence Homology: Human: 100%
Protein Families:	Druggable Genome



[View online »](#)

## Product images:



WB Suggested Anti-UBQLNL Antibody Titration:  
0.2-1 ug/ml; Positive Control: 293T cell lysate