

## Product datasheet for **TA340383**

### UBLCP1 Rabbit Polyclonal Antibody

#### Product data:

Product Type:	Primary Antibodies
Applications:	WB
Recommended Dilution:	WB
Reactivity:	Mouse, Human
Host:	Rabbit
Isotype:	IgG
Clonality:	Polyclonal
Immunogen:	The immunogen for anti-UBLCP1 antibody: synthetic peptide directed towards the N terminal of human UBLCP1. Synthetic peptide located within the following region: MALPIIVKWGGQEYSVTTLSEDDTVLDLKQFLKTLTGVLPERQKLLGLKV
Formulation:	Liquid. Purified antibody supplied in 1x PBS buffer with 0.09% (w/v) sodium azide and 2% sucrose. <i>Note that this product is shipped as lyophilized powder to China customers.</i>
Concentration:	lot specific
Purification:	Affinity Purified
Conjugation:	Unconjugated
Storage:	Store at -20°C as received.
Stability:	Stable for 12 months from date of receipt.
Predicted Protein Size:	37 kDa
Gene Name:	ubiquitin like domain containing CTD phosphatase 1
Database Link:	<a href="#">NP_659486</a> <a href="#">Entrez Gene 79560 Mouse</a> <a href="#">Entrez Gene 134510 Human</a> <a href="#">Q8WVY7</a>
Background:	UBLCP1 may specifically dephosphorylate 'Ser-5' of the heptad repeats YSPTSPS in the C-terminal domain of the largest RNA polymerase II subunit.
Synonyms:	CPUB1



[View online »](#)

**Note:** Immunogen Sequence Homology: Dog: 100%; Pig: 100%; Rat: 100%; Horse: 100%; Human: 100%; Mouse: 100%; Bovine: 100%; Rabbit: 100%; Guinea pig: 100%; Zebrafish: 79%

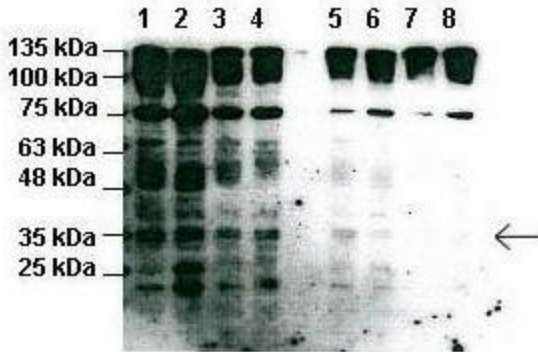
**Protein Families:** Druggable Genome, Protease

**Product images:**



UBLCP1

WB Suggested Anti-UBLCP1 Antibody Titration: 0.2-1 ug/ml; ELISA Titer: 1: 1562500; Positive Control: Human Thymus



Lanes: 1: CD4 T cell lysate from WT mice, 2: CD4 T cell lysate from WT mice treated with anti-CD3/CD28, 3: CD4 T cell lysate from WT mice treated with FK506, 4: CD4 T cell lysate from WT mice treated with anti-CD3/CD28 and FK506, 5: CD4 T cell lysate from