

Product datasheet for **TA340378**

STK32A Rabbit Polyclonal Antibody

Product data:

Product Type:	Primary Antibodies
Applications:	WB
Recommended Dilution:	WB
Reactivity:	Human
Host:	Rabbit
Isotype:	IgG
Clonality:	Polyclonal
Immunogen:	The immunogen for anti-STK32A antibody: synthetic peptide directed towards the N terminal of human STK32A. Synthetic peptide located within the following region: GANTSRKPPVFDENEDVNFDFEILRAIGKGSFGKVCIVQKNDTKKMYAM
Formulation:	Liquid. Purified antibody supplied in 1x PBS buffer with 0.09% (w/v) sodium azide and 2% sucrose. <i>Note that this product is shipped as lyophilized powder to China customers.</i>
Concentration:	lot specific
Purification:	Affinity Purified
Conjugation:	Unconjugated
Storage:	Store at -20°C as received.
Stability:	Stable for 12 months from date of receipt.
Predicted Protein Size:	20 kDa
Gene Name:	serine/threonine kinase 32A
Database Link:	NP_659438 Entrez Gene 202374 Human Q8WU08
Background:	STK32A belongs to the protein kinase superfamily, Ser/Thr protein kinase family. It contains 1 protein kinase domain. The function of the STK32A protein remains unknown.
Synonyms:	YANK1

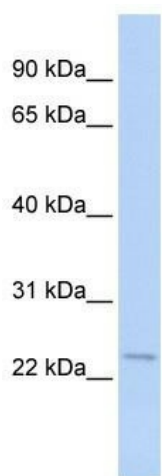


[View online »](#)

Note: Immunogen Sequence Homology: Human: 100%; Bovine: 93%; Rabbit: 93%; Mouse: 86%; Dog: 79%; Pig: 79%; Rat: 79%; Horse: 79%; Guinea pig: 79%

Protein Families: Druggable Genome, Protein Kinase

Product images:



WB Suggested Anti-STK32A Antibody Titration:
0.2-1 ug/ml; ELISA Titer: 1: 312500; Positive
Control: 721_B cell lysate