

Product datasheet for TA340377

MHF2 (CENPX) Rabbit Polyclonal Antibody

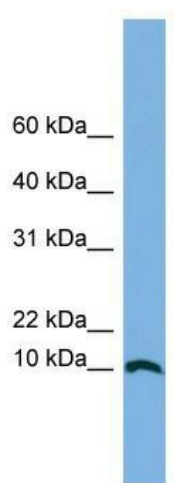
Product data:

Product Type:	Primary Antibodies
Applications:	WB
Recommended Dilution:	WB
Reactivity:	Human
Host:	Rabbit
Isotype:	IgG
Clonality:	Polyclonal
Immunogen:	The immunogen for anti-STRA13 antibody: synthetic peptide directed towards the middle region of human STRA13. Synthetic peptide located within the following region: MEGAGAGSGFRKELVSRLHLHFKDDKTKEAAVRGVRQAQEDALRVDVD
Formulation:	Liquid. Purified antibody supplied in 1x PBS buffer with 0.09% (w/v) sodium azide and 2% sucrose.
Concentration:	lot specific
Purification:	Affinity Purified
Conjugation:	Unconjugated
Storage:	Store at -20°C as received.
Stability:	Stable for 12 months from date of receipt.
Predicted Protein Size:	7 kDa
Gene Name:	stimulated by retinoic acid 13
Database Link:	NP_659435 Entrez Gene 201254 Human A8MT69
Background:	STRA13 is a DNA-binding component of the FA core complex involved in DNA damage repair and genome maintenance. STRA13 is recruited to forks stalled by DNA interstrand cross-links, and required for cellular resistance to such lesions. As a component of the APITD1/CENPS complex, STRA13 is also essential for the stable assembly of the outer kinetochore.
Synonyms:	CENP-X; D9; FAAP10; MHF2; STRA13


[View online »](#)

Note: Immunogen Sequence Homology: Human: 100%

Product images:



WB Suggested Anti-STRA13 Antibody Titration:
0.2-1 ug/ml; ELISA Titer: 1: 1562500; Positive
Control: A549 cell lysate