

Product datasheet for **TA340376**

ARL13B Rabbit Polyclonal Antibody

Product data:

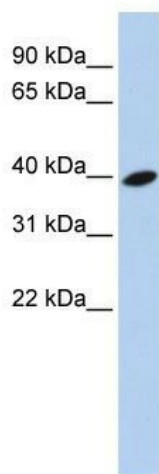
Product Type:	Primary Antibodies
Applications:	WB
Recommended Dilution:	WB
Reactivity:	Human
Host:	Rabbit
Isotype:	IgG
Clonality:	Polyclonal
Immunogen:	The immunogen for anti-ARL13B antibody: synthetic peptide directed towards the middle region of human ARL13B. Synthetic peptide located within the following region: VEPLNIDDCAPESPTPPPPPPVWGTPKVTRLPKLEPLGETHHNDFYRK
Formulation:	Liquid. Purified antibody supplied in 1x PBS buffer with 0.09% (w/v) sodium azide and 2% sucrose. <i>Note that this product is shipped as lyophilized powder to China customers.</i>
Concentration:	lot specific
Purification:	Affinity Purified
Conjugation:	Unconjugated
Storage:	Store at -20°C as received.
Stability:	Stable for 12 months from date of receipt.
Predicted Protein Size:	36 kDa
Gene Name:	ADP ribosylation factor like GTPase 13B
Database Link:	NP_659433 Entrez Gene 200894 Human Q3SXY8
Background:	ARL13B has an evolutionarily conserved role mediating cilia function in multiple organs. N and C domains of ARL13B cooperatively regulate its ciliary localization and that N domain-dependent self-association of Arl13b may be important for its function in cilia biogenesis.
Synonyms:	ARL2L1; JBTS8



[View online »](#)

Note: Immunogen Sequence Homology: Pig: 100%; Human: 100%; Guinea pig: 100%; Dog: 93%; Rat: 93%; Mouse: 93%; Bovine: 93%; Rabbit: 93%; Horse: 79%; Zebrafish: 79%

Product images:



WB Suggested Anti-ARL13B Antibody Titration:
0.2-1 ug/ml; ELISA Titer: 1: 312500; Positive
Control: 721_B cell lysate