

## Product datasheet for **TA340374**

### SLFNL1 Rabbit Polyclonal Antibody

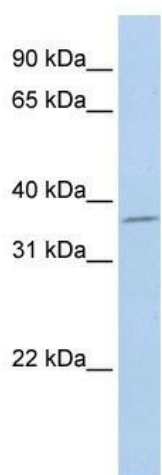
#### Product data:

Product Type:	Primary Antibodies
Applications:	WB
Recommended Dilution:	WB
Reactivity:	Human
Host:	Rabbit
Isotype:	IgG
Clonality:	Polyclonal
Immunogen:	The immunogen for anti-SLFNL1 antibody: synthetic peptide directed towards the middle region of human SLFNL1. Synthetic peptide located within the following region: TVHTPKAQSQPQLYQTDQGEVFLRRDGSIQGPLSASAIQEWCRQRWLVEL
Formulation:	Liquid. Purified antibody supplied in 1x PBS buffer with 0.09% (w/v) sodium azide and 2% sucrose. <i>Note that this product is shipped as lyophilized powder to China customers.</i>
Concentration:	lot specific
Purification:	Affinity Purified
Conjugation:	Unconjugated
Storage:	Store at -20°C as received.
Stability:	Stable for 12 months from date of receipt.
Predicted Protein Size:	45 kDa
Gene Name:	schlafen like 1
Database Link:	<a href="#">NP_659427</a> <a href="#">Entrez Gene 200172 Human Q499Z3</a>
Background:	SLFNL1 belongs to the Schlafen family. The function of the SLFNL1 protein remains unknown.
Synonyms:	FLJ23878; MGC43873
Note:	Immunogen Sequence Homology: Rat: 100%; Human: 100%; Mouse: 100%; Bovine: 100%; Rabbit: 100%; Dog: 93%; Pig: 93%; Horse: 86%; Guinea pig: 86%



[View online »](#)

## Product images:



WB Suggested Anti-SLFNL1 Antibody Titration:  
0.2-1 ug/ml; ELISA Titer: 1: 312500; Positive  
Control: Jurkat cell lysate