

Product datasheet for **TA340373**

CCDC138 Rabbit Polyclonal Antibody

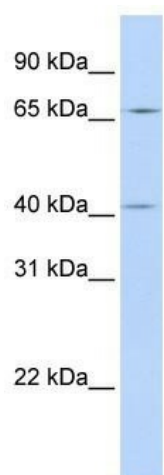
Product data:

Product Type:	Primary Antibodies
Applications:	WB
Recommended Dilution:	WB
Reactivity:	Human
Host:	Rabbit
Isotype:	IgG
Clonality:	Polyclonal
Immunogen:	The immunogen for anti-CCDC138 antibody: synthetic peptide directed towards the N terminal of human CCDC138. Synthetic peptide located within the following region: EPRVVKPPGQDLVWESLKSRVGLGGSCPDEYDFSNFYQSKYKRRTLTPG
Formulation:	Liquid. Purified antibody supplied in 1x PBS buffer with 0.09% (w/v) sodium azide and 2% sucrose. <i>Note that this product is shipped as lyophilized powder to China customers.</i>
Concentration:	lot specific
Purification:	Affinity Purified
Conjugation:	Unconjugated
Storage:	Store at -20°C as received.
Stability:	Stable for 12 months from date of receipt.
Predicted Protein Size:	76 kDa
Gene Name:	coiled-coil domain containing 138
Database Link:	NP_659415 Entrez Gene 165055 Human Q96M89
Background:	The function of the CCDC138 protein remains unknown.
Synonyms:	FLJ32745
Note:	Immunogen Sequence Homology: Human: 100%



[View online »](#)

Product images:



WB Suggested Anti-CCDC138 Antibody Titration:
0.2-1 ug/ml; ELISA Titer: 1: 312500; Positive
Control: 721_B cell lysate