

## Product datasheet for **TA340371**

### **DENND1B Rabbit Polyclonal Antibody**

#### **Product data:**

<b>Product Type:</b>	Primary Antibodies
<b>Applications:</b>	WB
<b>Recommended Dilution:</b>	WB
<b>Reactivity:</b>	Human
<b>Host:</b>	Rabbit
<b>Isotype:</b>	IgG
<b>Clonality:</b>	Polyclonal
<b>Immunogen:</b>	The immunogen for anti-DENND1B antibody: synthetic peptide directed towards the N terminal of human DENND1B. Synthetic peptide located within the following region: YKLLNTLADYLAKELENDLNETLRSLYNHPVPKANTPVNLSVNQEIFIAC
<b>Formulation:</b>	Liquid. Purified antibody supplied in 1x PBS buffer with 0.09% (w/v) sodium azide and 2% sucrose. <i>Note that this product is shipped as lyophilized powder to China customers.</i>
<b>Concentration:</b>	lot specific
<b>Purification:</b>	Affinity Purified
<b>Conjugation:</b>	Unconjugated
<b>Storage:</b>	Store at -20°C as received.
<b>Stability:</b>	Stable for 12 months from date of receipt.
<b>Predicted Protein Size:</b>	45 kDa
<b>Gene Name:</b>	DENN domain containing 1B
<b>Database Link:</b>	<a href="#">NP_659414</a> <a href="#">Entrez Gene 163486 Human</a> <a href="#">Q6P3S1</a>
<b>Background:</b>	DENND1B contains 1 dDENN domain, 1 DENN domain and 1 uDENN domain. The function of the DENND1B protein remains unknown.
<b>Synonyms:</b>	C1ORF18; C1orf218; FAM31B

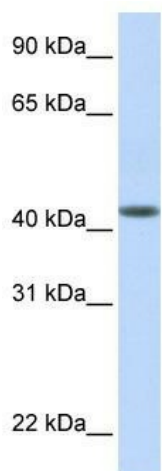


[View online »](#)

**Note:** Immunogen Sequence Homology: Human: 100%; Bovine: 100%; Pig: 93%; Horse: 93%; Mouse: 93%; Guinea pig: 93%; Rat: 86%; Rabbit: 86%

**Protein Families:** Transmembrane

**Product images:**



WB Suggested Anti-DENND1B Antibody Titration:  
0.2-1 ug/ml; ELISA Titer: 1: 62500; Positive  
Control: Human Muscle