

Product datasheet for **TA340369**

ARHGAP36 Rabbit Polyclonal Antibody

Product data:

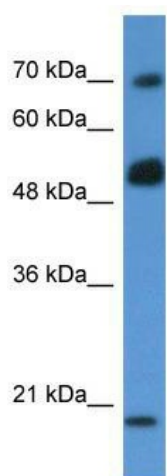
Product Type:	Primary Antibodies
Applications:	WB
Recommended Dilution:	WB
Reactivity:	Human
Host:	Rabbit
Isotype:	IgG
Clonality:	Polyclonal
Immunogen:	The immunogen for anti-ARHGAP36 antibody: synthetic peptide directed towards the N terminal of human ARHGAP36. Synthetic peptide located within the following region: KPDRALPIDRPNTLDKWFLILRGQRAVSHKTFGISLEEVLVNEFTRRKH
Formulation:	Liquid. Purified antibody supplied in 1x PBS buffer with 0.09% (w/v) sodium azide and 2% sucrose.
Concentration:	lot specific
Purification:	Affinity Purified
Conjugation:	Unconjugated
Storage:	Store at -20°C as received.
Stability:	Stable for 12 months from date of receipt.
Predicted Protein Size:	62 kDa
Gene Name:	Rho GTPase activating protein 36
Database Link:	NP_659404 Entrez Gene 158763 Human Q6ZRI8
Background:	ARHGAP36 is the GTPase activator for the Rho-type GTPases by converting them to an inactive GDP-bound state.
Synonyms:	RP13-102H20.1
Note:	Immunogen Sequence Homology: Human: 100%; Horse: 93%; Rabbit: 93%; Mouse: 86%; Pig: 83%; Goat: 79%; Sheep: 79%



[View online »](#)

Protein Families: Transmembrane

Product images:



WB Suggested Anti-ARHGAP36 Antibody;
Titration: 1 ug/ml; Positive Control: MCF7 Whole Cell