

Product datasheet for **TA340368**

DUSP10 Rabbit Polyclonal Antibody

Product data:

Product Type:	Primary Antibodies
Applications:	WB
Recommended Dilution:	WB
Reactivity:	Human
Host:	Rabbit
Isotype:	IgG
Clonality:	Polyclonal
Immunogen:	The immunogen for anti-DUSP10 antibody: synthetic peptide directed towards the N terminal of human DUSP10. Synthetic peptide located within the following region: MQRLNIGYVINVTTHLPLYHYEKGLFNKRLPATDSNKQNLQRQYFEEAFE
Formulation:	Liquid. Purified antibody supplied in 1x PBS buffer with 0.09% (w/v) sodium azide and 2% sucrose. <i>Note that this product is shipped as lyophilized powder to China customers.</i>
Concentration:	lot specific
Purification:	Affinity Purified
Conjugation:	Unconjugated
Storage:	Store at -20°C as received.
Stability:	Stable for 12 months from date of receipt.
Predicted Protein Size:	16 kDa
Gene Name:	dual specificity phosphatase 10
Database Link:	NP_653329 Entrez Gene 11221 Human Q9Y6W6
Background:	Dual specificity protein phosphatases inactivate their target kinases by dephosphorylating both the phosphoserine/threonine and phosphotyrosine residues. They negatively regulate members of the MAPK superfamily (MAPK/ERK, SAPK/JNK, p38), which is associat
Synonyms:	MKP-5; MKP5



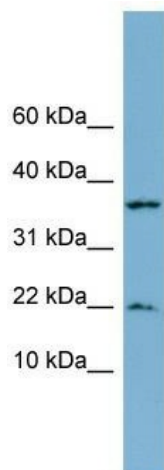
[View online »](#)

Note: Immunogen Sequence Homology: Dog: 100%; Pig: 100%; Rat: 100%; Horse: 100%; Human: 100%; Mouse: 100%; Bovine: 100%; Rabbit: 100%; Zebrafish: 100%; Guinea pig: 93%

Protein Families: Druggable Genome, Phosphatase

Protein Pathways: MAPK signaling pathway

Product images:



WB Suggested Anti-DUSP10 Antibody Titration:
0.2-1 ug/ml; ELISA Titer: 1: 62500; Positive
Control: THP-1 cell lysate