

Product datasheet for **TA340367**

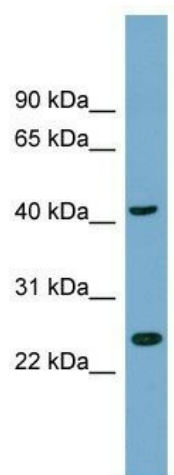
TTC23L Rabbit Polyclonal Antibody

Product data:

Product Type:	Primary Antibodies
Applications:	WB
Recommended Dilution:	WB
Reactivity:	Human
Host:	Rabbit
Isotype:	IgG
Clonality:	Polyclonal
Immunogen:	The immunogen for anti-TTC23L antibody: synthetic peptide directed towards the N terminal of human TTC23L. Synthetic peptide located within the following region: MQASPIRIPVSNIDWDWDFCFHMSQQTEIPAHQQTDELYPTGGCGESEE
Formulation:	Liquid. Purified antibody supplied in 1x PBS buffer with 0.09% (w/v) sodium azide and 2% sucrose. <i>Note that this product is shipped as lyophilized powder to China customers.</i>
Concentration:	lot specific
Purification:	Affinity Purified
Conjugation:	Unconjugated
Storage:	Store at -20°C as received.
Stability:	Stable for 12 months from date of receipt.
Predicted Protein Size:	41 kDa
Gene Name:	tetratricopeptide repeat domain 23 like
Database Link:	NP_653326 Entrez Gene 153657 Human Q6PF05
Background:	The function of this protein remains unknown.
Synonyms:	MC25-1
Note:	Immunogen Sequence Homology: Human: 100%; Horse: 86%; Bovine: 79%; Rabbit: 79%



[View online »](#)

Product images:

WB Suggested Anti-TTC23L Antibody Titration:
0.2-1 ug/ml; Positive Control: Human Thymus