

## Product datasheet for **TA340366**

### THAP6 Rabbit Polyclonal Antibody

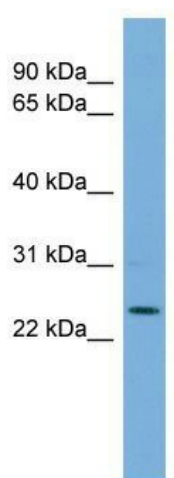
#### Product data:

Product Type:	Primary Antibodies
Applications:	WB
Recommended Dilution:	WB
Reactivity:	Human
Host:	Rabbit
Isotype:	IgG
Clonality:	Polyclonal
Immunogen:	The immunogen for anti-THAP6 antibody: synthetic peptide directed towards the middle region of human THAP6. Synthetic peptide located within the following region: FDRSAPNIKLPKPGVIPSIFDSPYHLQGKREKLHCRKNFTLKTVPATNYNH
Formulation:	Liquid. Purified antibody supplied in 1x PBS buffer with 0.09% (w/v) sodium azide and 2% sucrose.
Concentration:	lot specific
Purification:	Affinity Purified
Conjugation:	Unconjugated
Storage:	Store at -20°C as received.
Stability:	Stable for 12 months from date of receipt.
Predicted Protein Size:	26 kDa
Gene Name:	THAP domain containing 6
Database Link:	<a href="#">NP_653322</a> <a href="#">Entrez Gene 152815 Human</a> <a href="#">Q8TBB0</a>
Background:	The function of THAP6 remains unknown.
Synonyms:	MGC30052
Note:	Immunogen Sequence Homology: Human: 100%; Pig: 93%; Dog: 86%; Rat: 86%; Horse: 86%



[View online »](#)

## Product images:



WB Suggested Anti-THAP6 Antibody Titration: 0.2-1 ug/ml; ELISA Titer: 1: 1562500; Positive Control: THP-1 cell lysate