

Product datasheet for **TA340365**

CCDC52 (SPICE1) Rabbit Polyclonal Antibody

Product data:

Product Type:	Primary Antibodies
Applications:	WB
Recommended Dilution:	WB
Reactivity:	Human
Host:	Rabbit
Isotype:	IgG
Clonality:	Polyclonal
Immunogen:	The immunogen for anti-SPICE1 antibody: synthetic peptide directed towards the middle region of human SPICE1. Synthetic peptide located within the following region: KEQNWEEKTLPIDTDIQNSSEENRLFTQRWRVSHMGEDLENKTQAPFVNL
Formulation:	Liquid. Purified antibody supplied in 1x PBS buffer with 0.09% (w/v) sodium azide and 2% sucrose.
Concentration:	lot specific
Purification:	Affinity Purified
Conjugation:	Unconjugated
Storage:	Store at -20°C as received.
Stability:	Stable for 12 months from date of receipt.
Predicted Protein Size:	96 kDa
Gene Name:	spindle and centriole associated protein 1
Database Link:	NP_653319 Entrez Gene 152185 Human Q8N0Z3
Background:	The specific function of SPICE1 is not yet known.
Synonyms:	CCDC52; SPICE
Note:	Immunogen Sequence Homology: Human: 100%; Mouse: 100%; Pig: 93%; Rat: 93%; Rabbit: 93%; Guinea pig: 93%; Horse: 92%; Dog: 79%; Bovine: 79%



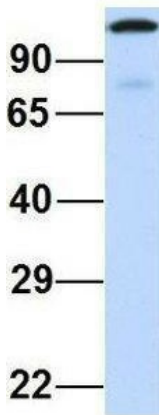
[View online »](#)

Product images:



WB Suggested Anti-SPICE1 Antibody Titration: 0.2-1 ug/ml; ELISA Titer: 1: 312500; Positive Control: Transfected 293T

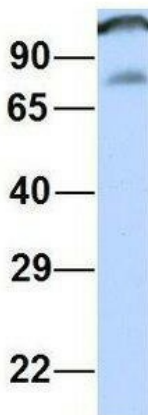
SPICE1



Rabbit Anti-SPICE1
Sample Type: Human Adult Placenta
Antibody Concentration: 1ug/mL

Host: Rabbit; Target Name: SPICE1; Sample Tissue: Human Adult Placenta; Antibody Dilution: 1.0 ug/ml

SPICE1



Rabbit Anti-SPICE1
Sample Type: Human Fetal Muscle
Antibody Concentration: 1ug/mL

Host: Rabbit; Target Name: SPICE1; Sample Tissue: Human Fetal Muscle; Antibody Dilution: 1.0 ug/ml

