

## Product datasheet for **TA340364**

### CCDC52 (SPICE1) Rabbit Polyclonal Antibody

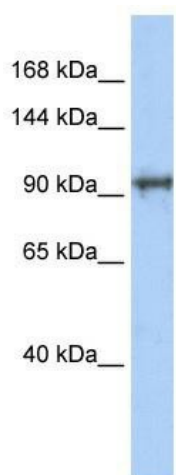
#### Product data:

Product Type:	Primary Antibodies
Applications:	WB
Recommended Dilution:	WB
Reactivity:	Human
Host:	Rabbit
Isotype:	IgG
Clonality:	Polyclonal
Immunogen:	The immunogen for anti-SPICE1 antibody: synthetic peptide directed towards the N terminal of human SPICE1. Synthetic peptide located within the following region: TVTDLTVHRATPEDLVRREIHKSKNRALVHWELQEKALKRKWRKQKPET
Formulation:	Liquid. Purified antibody supplied in 1x PBS buffer with 0.09% (w/v) sodium azide and 2% sucrose. <i>Note that this product is shipped as lyophilized powder to China customers.</i>
Concentration:	lot specific
Purification:	Affinity Purified
Conjugation:	Unconjugated
Storage:	Store at -20°C as received.
Stability:	Stable for 12 months from date of receipt.
Predicted Protein Size:	96 kDa
Gene Name:	spindle and centriole associated protein 1
Database Link:	<a href="#">NP_653319</a> <a href="#">Entrez Gene 152185 Human</a> <a href="#">Q8N0Z3</a>
Background:	The specific function of SPICE1 is not yet known.
Synonyms:	CCDC52; SPICE
Note:	Immunogen Sequence Homology: Rat: 100%; Human: 100%; Mouse: 100%; Dog: 93%; Pig: 93%; Bovine: 93%; Rabbit: 93%; Horse: 86%



[View online »](#)

## Product images:



WB Suggested Anti-SPICE1 Antibody Titration:  
0.2-1 ug/ml; ELISA Titer: 1: 312500; Positive  
Control: Transfected 293T