

## Product datasheet for **TA340363**

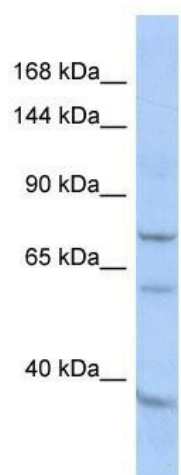
### EFHB Rabbit Polyclonal Antibody

#### Product data:

Product Type:	Primary Antibodies
Applications:	WB
Recommended Dilution:	WB
Reactivity:	Human
Host:	Rabbit
Isotype:	IgG
Clonality:	Polyclonal
Immunogen:	The immunogen for Anti-EFHB antibody is: synthetic peptide directed towards the C-terminal region of Human EFHB. Synthetic peptide located within the following region: YGEEGSAYSLLYPTIFARKGVFERDFFKTRSKEEIAEILCNIGVKLSDEE
Formulation:	Liquid. Purified antibody supplied in 1x PBS buffer with 0.09% (w/v) sodium azide and 2% sucrose. <i>Note that this product is shipped as lyophilized powder to China customers.</i>
Concentration:	lot specific
Purification:	Affinity Purified
Conjugation:	Unconjugated
Storage:	Store at -20°C as received.
Stability:	Stable for 12 months from date of receipt.
Predicted Protein Size:	77 kDa
Gene Name:	EF-hand domain family member B
Database Link:	<a href="#">NP_653316</a> <a href="#">Entrez Gene 151651 Human</a> <a href="#">Q8N7U6</a>
Background:	The function of this protein remains unknown.
Synonyms:	CFAP21
Note:	Immunogen Sequence Homology: Rat: 100%; Human: 100%; Mouse: 100%; Rabbit: 100%; Dog: 93%; Pig: 93%; Horse: 93%; Bovine: 93%; Guinea pig: 93%



[View online »](#)

**Product images:**

Host: Rabbit; Target Name: EFHB; Sample Tissue: HepG2 Whole cell lysates; Antibody Dilution: 1.0 ug/ml