

Product datasheet for **TA340362**

FAM82A1 (RMDN2) Rabbit Polyclonal Antibody

Product data:

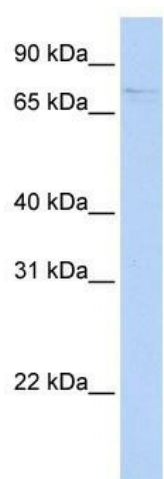
Product Type:	Primary Antibodies
Applications:	WB
Recommended Dilution:	WB
Reactivity:	Human
Host:	Rabbit
Isotype:	IgG
Clonality:	Polyclonal
Immunogen:	The immunogen for anti-RMDN2 antibody: synthetic peptide directed towards the middle region of human RMDN2. Synthetic peptide located within the following region: RAPMNGHCHLWYAVLCGYVSEFEGQLQNKINYGHLFKEHLDAIKLLPEEP
Formulation:	Liquid. Purified antibody supplied in 1x PBS buffer with 0.09% (w/v) sodium azide and 2% sucrose. <i>Note that this product is shipped as lyophilized powder to China customers.</i>
Concentration:	lot specific
Purification:	Affinity Purified
Conjugation:	Unconjugated
Storage:	Store at -20°C as received.
Stability:	Stable for 12 months from date of receipt.
Predicted Protein Size:	65 kDa
Gene Name:	regulator of microtubule dynamics 2
Database Link:	NP_653314 Entrez Gene 151393 Human Q96LZ7
Background:	RMDN2 belongs to the FAM82/RMD family. It is a single-pass membrane protein. The function of the RMDN2 protein remains unknown.
Synonyms:	BLOCK18; FAM82A; FAM82A1; PRO34163; PYST9371; RMD-2; RMD2; RMD4



[View online »](#)

Note: Immunogen Sequence Homology: Dog: 100%; Pig: 100%; Rat: 100%; Horse: 100%; Human: 100%; Mouse: 100%; Bovine: 100%; Rabbit: 100%; Guinea pig: 93%

Product images:



WB Suggested Anti-RMDN2 Antibody Titration:
0.2-1 ug/ml; ELISA Titer: 1: 312500; Positive
Control: 293T cell lysate