

Product datasheet for **TA340358**

TEKT4 Rabbit Polyclonal Antibody

Product data:

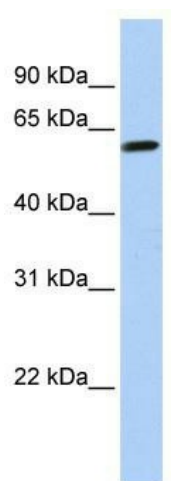
| | |
|-------------------------|--|
| Product Type: | Primary Antibodies |
| Applications: | WB |
| Recommended Dilution: | WB |
| Reactivity: | Human |
| Host: | Rabbit |
| Isotype: | IgG |
| Clonality: | Polyclonal |
| Immunogen: | The immunogen for anti-TEKT4 antibody: synthetic peptide directed towards the N terminal of human TEKT4. Synthetic peptide located within the following region: TSKYLLEEFQNCYARYHQAFADRDQSERQRHESQQLATETQALAQRTQQ |
| Formulation: | Liquid. Purified antibody supplied in 1x PBS buffer with 0.09% (w/v) sodium azide and 2% sucrose. <i>Note that this product is shipped as lyophilized powder to China customers.</i> |
| Concentration: | lot specific |
| Purification: | Affinity Purified |
| Conjugation: | Unconjugated |
| Storage: | Store at -20°C as received. |
| Stability: | Stable for 12 months from date of receipt. |
| Predicted Protein Size: | 51 kDa |
| Gene Name: | tektin 4 |
| Database Link: | NP_653306 Entrez Gene 150483 Human Q8WW24 |
| Background: | TEKT4 belongs to the tektin family. TEKT4 is a structural component of ciliary and flagellar microtubules. It forms filamentous polymers in the walls of ciliary and flagellar microtubules. |
| Synonyms: | MGC27019 |



[View online »](#)

Note: Immunogen Sequence Homology: Human: 100%; Bovine: 100%; Horse: 93%; Pig: 92%; Rat: 92%; Mouse: 91%; Guinea pig: 86%; Dog: 79%

Product images:



WB Suggested Anti-TEKT4 Antibody Titration: 0.2-1 ug/ml; ELISA Titer: 1: 62500; Positive Control: Hela cell lysate