

Product datasheet for **TA340356**

FAM61B (LSM14B) Rabbit Polyclonal Antibody

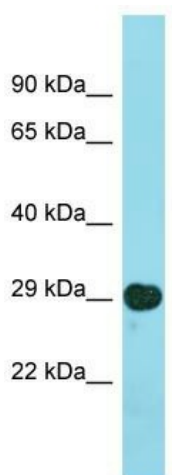
Product data:

Product Type:	Primary Antibodies
Applications:	WB
Recommended Dilution:	WB
Reactivity:	Human
Host:	Rabbit
Isotype:	IgG
Clonality:	Polyclonal
Immunogen:	The immunogen for Anti-LSM14B antibody is: synthetic peptide directed towards the N-terminal region of HUMAN LSM14B. Synthetic peptide located within the following region: GPLAASSLLSQQYAASLGLKLVSPASAAASSPSSSPSPQPVSELDLSS
Formulation:	Liquid. Purified antibody supplied in 1x PBS buffer with 0.09% (w/v) sodium azide and 2% sucrose. <i>Note that this product is shipped as lyophilized powder to China customers.</i>
Concentration:	lot specific
Purification:	Affinity Purified
Conjugation:	Unconjugated
Storage:	Store at -20°C as received.
Stability:	Stable for 12 months from date of receipt.
Predicted Protein Size:	26 kDa
Gene Name:	LSM family member 14B
Database Link:	NP_653304 Entrez Gene 149986 Human Q9BX40
Background:	LSM14B may play a role in control of mRNA translation.
Synonyms:	bA11M20.3; C20orf40; FAM61B; FT005; LSM13; RAP55B
Note:	Immunogen Sequence Homology: Dog: 100%; Pig: 100%; Rat: 100%; Horse: 100%; Human: 100%; Mouse: 100%; Bovine: 100%; Rabbit: 93%; Zebrafish: 92%



[View online »](#)

Product images:



Host: Rabbit
Target Name: LSM14B
Sample Tissue: Fetal Brain Lysate
Antibody Dilution: 1.0 μ g/ml

Host: Rabbit; Target Name: LSM14B; Sample Tissue: Fetal Brain lysates; Antibody Dilution: 1.0 ug/ml