

## Product datasheet for **TA340354**

### C1orf51 (CIART) Rabbit Polyclonal Antibody

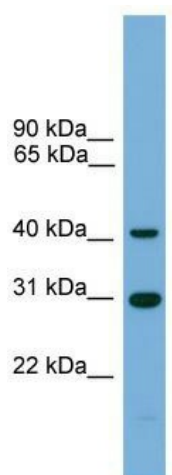
#### Product data:

|                         |  |
|-------------------------|--|
| Product Type:           | Primary Antibodies   |
| Applications:           | WB   |
| Recommended Dilution:   | WB   |
| Reactivity:             | Human  |
| Host:                   | Rabbit   |
| Isotype:                | IgG  |
| Clonality:              | Polyclonal   |
| Immunogen:              | The immunogen for anti-C1orf51 antibody: synthetic peptide directed towards the middle region of human C1orf51. Synthetic peptide located within the following region:<br>GRFERGLSSFQQSVAMDRIQRIVGVLQKPKMGERYLGTLLQVEGMLKTWF |
| Formulation:            | Liquid. Purified antibody supplied in 1x PBS buffer with 0.09% (w/v) sodium azide and 2% sucrose.<br><i>Note that this product is shipped as lyophilized powder to China customers.</i>                                      |
| Concentration:          | lot specific   |
| Purification:           | Affinity Purified  |
| Conjugation:            | Unconjugated   |
| Storage:                | Store at -20°C as received.  |
| Stability:              | Stable for 12 months from date of receipt.   |
| Predicted Protein Size: | 41 kDa   |
| Gene Name:              | circadian associated repressor of transcription  |
| Database Link:          | <a href="#">NP_653298</a><br><a href="#">Entrez Gene 148523 Human</a><br><a href="#">Q8N365</a>  |
| Background:             | The function of this protein remains unknown.  |
| Synonyms:               | C1orf51; CHRONO; GM129   |
| Note:                   | Immunogen Sequence Homology: Pig: 100%; Horse: 100%; Human: 100%; Mouse: 100%; Rabbit: 100%; Dog: 93%; Rat: 93%; Guinea pig: 93%; Bovine: 86%; Zebrafish: 85%  |



[View online »](#)

## Product images:



WB Suggested Anti-C1orf51 Antibody Titration:  
0.2-1 ug/ml; ELISA Titer: 1: 312500; Positive  
Control: Human heart