

Product datasheet for **TA340353**

HIPK4 Rabbit Polyclonal Antibody

Product data:

Product Type:	Primary Antibodies
Applications:	WB
Recommended Dilution:	WB
Reactivity:	Human
Host:	Rabbit
Isotype:	IgG
Clonality:	Polyclonal
Immunogen:	The immunogen for anti-HIPK4 antibody: synthetic peptide directed towards the middle region of human HIPK4. Synthetic peptide located within the following region: AEEKEAAGMGSVAGSSPFFREEKAPGMQRAIDQLDDLSLQEAGHGLWGET
Formulation:	Liquid. Purified antibody supplied in 1x PBS buffer with 0.09% (w/v) sodium azide and 2% sucrose. <i>Note that this product is shipped as lyophilized powder to China customers.</i>
Concentration:	lot specific
Purification:	Affinity Purified
Conjugation:	Unconjugated
Storage:	Store at -20°C as received.
Stability:	Stable for 12 months from date of receipt.
Predicted Protein Size:	69 kDa
Gene Name:	homeodomain interacting protein kinase 4
Database Link:	NP_653286 Entrez Gene 147746 Human Q8NE63
Background:	HIPK4 is a protein kinase that phosphorylates human TP53 at Ser-9, and thus induces TP53 repression of BIRC5 promoter. It may act as a corepressor of transcription factors.
Synonyms:	FLJ32818

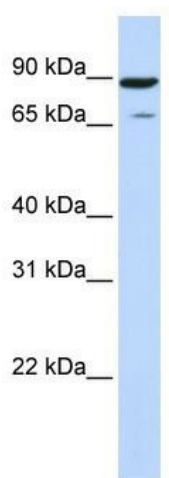


[View online »](#)

Note: Immunogen Sequence Homology: Dog: 100%; Pig: 100%; Rat: 100%; Horse: 100%; Human: 100%; Mouse: 100%; Bovine: 100%; Rabbit: 100%; Guinea pig: 100%

Protein Families: Druggable Genome, Protein Kinase

Product images:



WB Suggested Anti-HIPK4 Antibody Titration: 0.2-1 ug/ml; ELISA Titer: 1: 1562500; Positive Control: 293T cell lysate