

Product datasheet for **TA340351**

PHETA1 Rabbit Polyclonal Antibody

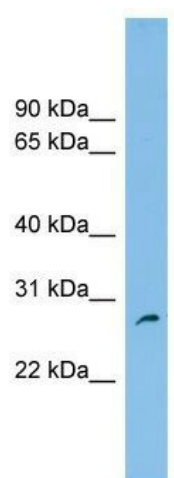
Product data:

Product Type:	Primary Antibodies
Applications:	WB
Recommended Dilution:	WB
Reactivity:	Human
Host:	Rabbit
Isotype:	IgG
Clonality:	Polyclonal
Immunogen:	The immunogen for anti-FAM109A antibody: synthetic peptide directed towards the N terminal of human FAM109A. Synthetic peptide located within the following region: HRRWFVLRGNMLFYFEDAASREPVGVIILEGCTVELVEAAEEFAFAVRFA
Formulation:	Liquid. Purified antibody supplied in 1x PBS buffer with 0.09% (w/v) sodium azide and 2% sucrose.
Concentration:	lot specific
Purification:	Affinity Purified
Conjugation:	Unconjugated
Storage:	Store at -20°C as received.
Stability:	Stable for 12 months from date of receipt.
Predicted Protein Size:	27 kDa
Gene Name:	family with sequence similarity 109 member A
Database Link:	NP_653272 Entrez Gene 144717 Human Q8N4B1
Background:	The function of this protein remains unknown.
Synonyms:	IPIP27A; SES1
Note:	Immunogen Sequence Homology: Pig: 100%; Human: 100%; Bovine: 100%; Dog: 93%



[View online »](#)

Product images:



WB Suggested Anti-FAM109A Antibody Titration:
0.2-1 ug/ml; ELISA Titer: 1: 1562500; Positive
Control: U937 cell lysate