

Product datasheet for **TA340350**

CFAP251 Rabbit Polyclonal Antibody

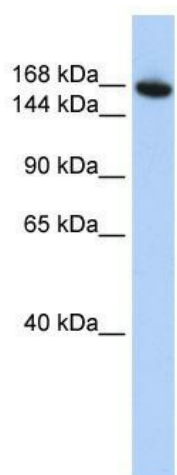
Product data:

Product Type:	Primary Antibodies
Applications:	WB
Recommended Dilution:	WB
Reactivity:	Human
Host:	Rabbit
Isotype:	IgG
Clonality:	Polyclonal
Immunogen:	The immunogen for anti-WDR66 antibody: synthetic peptide directed towards the N terminal of human WDR66. Synthetic peptide located within the following region: GELEEKTRMPQDELGQERRDLEPENREEGQERRVSDIQSKAGISRESLV
Formulation:	Liquid. Purified antibody supplied in 1x PBS buffer with 0.09% (w/v) sodium azide and 2% sucrose. <i>Note that this product is shipped as lyophilized powder to China customers.</i>
Concentration:	lot specific
Purification:	Affinity Purified
Conjugation:	Unconjugated
Storage:	Store at -20°C as received.
Stability:	Stable for 12 months from date of receipt.
Predicted Protein Size:	130 kDa
Gene Name:	WD repeat domain 66
Database Link:	NP_653269 Entrez Gene 144406 Human Q8TBY9
Background:	WDR66 contains 9 WD repeats. The functions of WDR66 remain unknown.
Synonyms:	CaM-IP4
Note:	Immunogen Sequence Homology: Dog: 100%; Human: 100%; Pig: 85%



[View online »](#)

Product images:



WB Suggested Anti-WDR66 Antibody Titration:
0.2-1 ug/ml; ELISA Titer: 1: 62500; Positive
Control: HepG2 cell lysate