

Product datasheet for **TA340349**

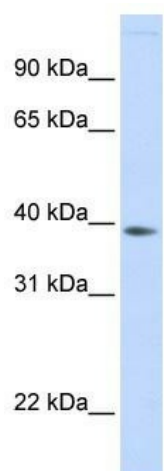
FAM76B Rabbit Polyclonal Antibody

Product data:

Product Type:	Primary Antibodies
Applications:	WB
Recommended Dilution:	WB
Reactivity:	Human
Host:	Rabbit
Isotype:	IgG
Clonality:	Polyclonal
Immunogen:	The immunogen for anti-FAM76B antibody: synthetic peptide directed towards the middle region of human FAM76B. Synthetic peptide located within the following region: QQCAFDNRKEEGRRKVDGKLLCWLCTLSYKRVLQKTKEQRKSLGSSHSNSS
Formulation:	Liquid. Purified antibody supplied in 1x PBS buffer with 0.09% (w/v) sodium azide and 2% sucrose. <i>Note that this product is shipped as lyophilized powder to China customers.</i>
Concentration:	lot specific
Purification:	Affinity Purified
Conjugation:	Unconjugated
Storage:	Store at -20°C as received.
Stability:	Stable for 12 months from date of receipt.
Predicted Protein Size:	39 kDa
Gene Name:	family with sequence similarity 76 member B
Database Link:	NP_653265 Entrez Gene 143684 Human Q5HYJ3
Background:	FAM76B belongs to the FAM76 family. The function of the FAM76B protein remains unknown.
Synonyms:	MGC33371
Note:	Immunogen Sequence Homology: Dog: 100%; Pig: 100%; Rat: 100%; Horse: 100%; Human: 100%; Mouse: 100%; Bovine: 100%; Guinea pig: 100%; Rabbit: 93%; Zebrafish: 93%



[View online »](#)

Product images:

WB Suggested Anti-FAM76B Antibody Titration:
0.2-1 ug/ml; ELISA Titer: 1: 62500; Positive
Control: Human Liver