

Product datasheet for **TA340348**

LETM2 Rabbit Polyclonal Antibody

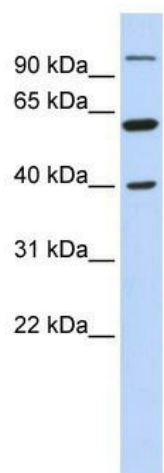
Product data:

Product Type:	Primary Antibodies
Applications:	WB
Recommended Dilution:	WB
Reactivity:	Human
Host:	Rabbit
Isotype:	IgG
Clonality:	Polyclonal
Immunogen:	The immunogen for anti-LETM2 antibody: synthetic peptide directed towards the N terminal of human LETM2. Synthetic peptide located within the following region: KNYESKKYSDPSQPGNTVLHPGTRLIQKLHTSTCWLQEVPKPKLEQATK
Formulation:	Liquid. Purified antibody supplied in 1x PBS buffer with 0.09% (w/v) sodium azide and 2% sucrose. <i>Note that this product is shipped as lyophilized powder to China customers.</i>
Concentration:	lot specific
Purification:	Affinity Purified
Conjugation:	Unconjugated
Storage:	Store at -20°C as received.
Stability:	Stable for 12 months from date of receipt.
Predicted Protein Size:	45 kDa
Gene Name:	leucine zipper and EF-hand containing transmembrane protein 2
Database Link:	NP_653253 Entrez Gene 137994 Human Q2VYF4
Background:	LETM2 contains 1 LETM1 domain. The function of the LETM1 protein remains unknown.
Synonyms:	FLJ25409
Note:	Immunogen Sequence Homology: Human: 100%



[View online »](#)

Product images:



WB Suggested Anti-LETM2 Antibody Titration: 0.2-1 ug/ml; ELISA Titer: 1: 312500; Positive Control: 721_B cell lysate