

Product datasheet for **TA340344**

PPM1M Rabbit Polyclonal Antibody

Product data:

Product Type:	Primary Antibodies
Applications:	WB
Recommended Dilution:	WB
Reactivity:	Human
Host:	Rabbit
Isotype:	IgG
Clonality:	Polyclonal
Immunogen:	The immunogen for anti-PPM1M antibody: synthetic peptide directed towards the middle region of human PPM1M. Synthetic peptide located within the following region: VYPELLAGEFTRLEFPRLKGDLDGQKVLFRDHHMSGWSYKRVEKSDLKY
Formulation:	Liquid. Purified antibody supplied in 1x PBS buffer with 0.09% (w/v) sodium azide and 2% sucrose. <i>Note that this product is shipped as lyophilized powder to China customers.</i>
Concentration:	lot specific
Purification:	Affinity Purified
Conjugation:	Unconjugated
Storage:	Store at -20°C as received.
Stability:	Stable for 12 months from date of receipt.
Predicted Protein Size:	30
Gene Name:	protein phosphatase, Mg ²⁺ /Mn ²⁺ dependent 1M
Database Link:	NP_653242 Entrez Gene 132160 Human Q96MI6
Background:	PPM1M belongs to the PP2C family. It contains 1 PP2C-like domain. The exact function of PPM1M is not known.
Synonyms:	PP2C-eta; PP2CE; PP2Ceta

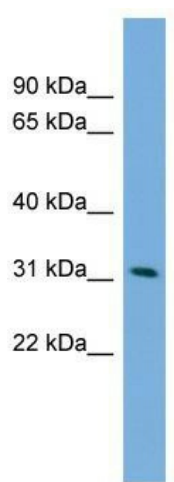


[View online »](#)

Note: Immunogen Sequence Homology: Dog: 100%; Pig: 100%; Rat: 100%; Horse: 100%; Human: 100%; Mouse: 100%; Bovine: 100%; Rabbit: 100%; Guinea pig: 100%

Protein Families: Druggable Genome, Phosphatase

Product images:



WB Suggested Anti-PPM1M Antibody Titration:
0.2-1 ug/ml; ELISA Titer: 1: 1562500; Positive
Control: HepG2 cell lysate