

Product datasheet for **TA340342**

RFTN2 Rabbit Polyclonal Antibody

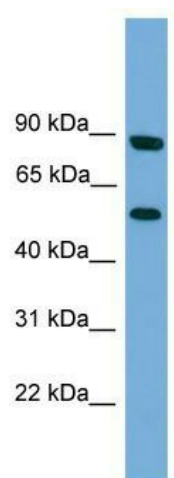
Product data:

| | |
|-------------------------|---|
| Product Type: | Primary Antibodies |
| Applications: | WB |
| Recommended Dilution: | WB |
| Reactivity: | Human |
| Host: | Rabbit |
| Isotype: | IgG |
| Clonality: | Polyclonal |
| Immunogen: | The immunogen for anti-RFTN2 antibody: synthetic peptide directed towards the N terminal of human RFTN2. Synthetic peptide located within the following region: MGCGLRKLEDPDDSSPGKIFSTLKRQVETKTEFAYEYVLLDFTLQASSN |
| Formulation: | Liquid. Purified antibody supplied in 1x PBS buffer with 0.09% (w/v) sodium azide and 2% sucrose. <i>Note that this product is shipped as lyophilized powder to China customers.</i> |
| Concentration: | lot specific |
| Purification: | Affinity Purified |
| Conjugation: | Unconjugated |
| Storage: | Store at -20°C as received. |
| Stability: | Stable for 12 months from date of receipt. |
| Predicted Protein Size: | 56 kDa |
| Gene Name: | raftlin family member 2 |
| Database Link: | NP_653230 Entrez Gene 130132 Human Q52LD8 |
| Background: | The function of the protein remains unknown. |
| Synonyms: | C2orf11; Raftlin-2 |
| Note: | Immunogen Sequence Homology: Dog: 100%; Pig: 100%; Horse: 100%; Human: 100%; Bovine: 100%; Rabbit: 100%; Rat: 93%; Mouse: 93%; Zebrafish: 93%; Guinea pig: 86% |



[View online »](#)

Product images:



WB Suggested Anti-RFTN2 Antibody Titration: 0.2-1 ug/ml; ELISA Titer: 1: 1562500; Positive Control: HT1080 cell lysate