

Product datasheet for **TA340341**

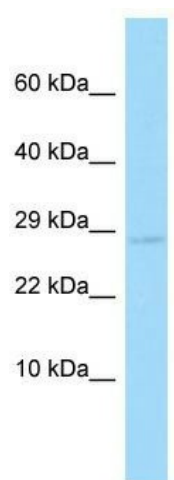
Cyb5d2 Rabbit Polyclonal Antibody

Product data:

Product Type:	Primary Antibodies
Applications:	WB
Recommended Dilution:	WB
Reactivity:	Rat
Host:	Rabbit
Isotype:	IgG
Clonality:	Polyclonal
Immunogen:	The immunogen for Anti-Cyb5d2 antibody is: synthetic peptide directed towards the C-terminal region of Rat Cyb5d2. Synthetic peptide located within the following region: EWSSAKGSRLWC SQSGGVHRDWIGVPRKLYKPGAKEPHCVCVRTTGPPS
Formulation:	Liquid. Purified antibody supplied in 1x PBS buffer with 0.09% (w/v) sodium azide and 2% sucrose.
Concentration:	lot specific
Purification:	Affinity Purified
Conjugation:	Unconjugated
Storage:	Store at -20°C as received.
Stability:	Stable for 12 months from date of receipt.
Predicted Protein Size:	28 kDa
Gene Name:	cytochrome b5 domain containing 2
Database Link:	NP_001007672 Entrez Gene 303293 Rat Q6AY62
Background:	Cyb5d2 is a heme-binding protein which promotes neuronal but not astrocyte differentiation.
Synonyms:	MGC32124
Note:	Immunogen Sequence Homology: Rat: 100%; Human: 100%; Mouse: 100%; Rabbit: 100%; Pig: 93%; Horse: 93%; Guinea pig: 93%; Dog: 86%; Bovine: 85%


[View online »](#)

Product images:



WB Suggested Anti-Cyb5d2 Antibody; Titration:
0.25 ug/ml; Positive Control: Rat Pancreas