

Product datasheet for **TA340339**

CYB5D1 Rabbit Polyclonal Antibody

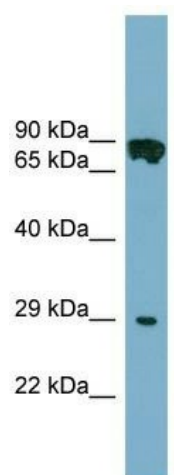
Product data:

| | |
|--------------------------------|--|
| Product Type: | Primary Antibodies |
| Applications: | WB |
| Recommended Dilution: | WB |
| Reactivity: | Human |
| Host: | Rabbit |
| Isotype: | IgG |
| Clonality: | Polyclonal |
| Immunogen: | The immunogen for anti-CYB5D1 antibody: synthetic peptide directed towards the middle region of human CYB5D1. Synthetic peptide located within the following region: KYEGKLNLMDFLENGIRDEEEFDYLSMDGTLHTPAILLYFNDDLTEL |
| Formulation: | Liquid. Purified antibody supplied in 1x PBS buffer with 0.09% (w/v) sodium azide and 2% sucrose. <i>Note that this product is shipped as lyophilized powder to China customers.</i> |
| Concentration: | lot specific |
| Purification: | Affinity Purified |
| Conjugation: | Unconjugated |
| Storage: | Store at -20°C as received. |
| Stability: | Stable for 12 months from date of receipt. |
| Predicted Protein Size: | 27 kDa |
| Gene Name: | cytochrome b5 domain containing 1 |
| Database Link: | NP_653208 Entrez Gene 124637 Human Q6P9G0 |
| Background: | The function of this protein remains unknown. |
| Synonyms: | FLJ32499 |
| Note: | Immunogen Sequence Homology: Rat: 100%; Human: 100%; Mouse: 100%; Dog: 93%; Pig: 93%; Rabbit: 93%; Guinea pig: 93%; Horse: 92%; Yeast: 82%; Bovine: 79% |



[View online »](#)

Product images:



WB Suggested Anti-CYB5D1 Antibody Titration:
0.2-1 ug/ml; Positive Control: COLO205 cell lysate