

Product datasheet for **TA340334**

LRRC28 Rabbit Polyclonal Antibody

Product data:

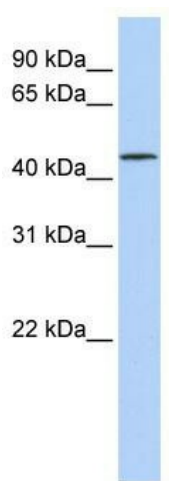
Product Type:	Primary Antibodies
Applications:	WB
Recommended Dilution:	WB
Reactivity:	Human
Host:	Rabbit
Isotype:	IgG
Clonality:	Polyclonal
Immunogen:	The immunogen for anti-LRRC28 antibody: synthetic peptide directed towards the N terminal of human LRRC28. Synthetic peptide located within the following region: KDEGLQYLERLYMKRNSLTSLPENLAQKLPNLVELYLHSNNIWWPEAIG
Formulation:	Liquid. Purified antibody supplied in 1x PBS buffer with 0.09% (w/v) sodium azide and 2% sucrose. <i>Note that this product is shipped as lyophilized powder to China customers.</i>
Concentration:	lot specific
Purification:	Affinity Purified
Conjugation:	Unconjugated
Storage:	Store at -20°C as received.
Stability:	Stable for 12 months from date of receipt.
Predicted Protein Size:	42 kDa
Gene Name:	leucine rich repeat containing 28
Database Link:	NP_653199 Entrez Gene 123355 Human Q86X40
Background:	LRRC28 contains 11 LRR (leucine-rich) repeats. The function of the LRRC28 protein is not known.
Synonyms:	FLJ34269; FLJ45242; MGC24976



[View online »](#)

Note: Immunogen Sequence Homology: Dog: 100%; Pig: 100%; Rat: 100%; Horse: 100%; Human: 100%; Mouse: 100%; Bovine: 100%; Rabbit: 100%; Guinea pig: 100%; Zebrafish: 86%

Product images:



WB Suggested Anti-LRRC28 Antibody Titration:
0.2-1 ug/ml; ELISA Titer: 1: 312500; Positive
Control: Jurkat cell lysate