

Product datasheet for **TA340333**

C15orf40 Rabbit Polyclonal Antibody

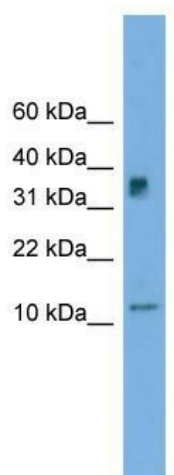
Product data:

Product Type:	Primary Antibodies
Applications:	WB
Recommended Dilution:	WB
Reactivity:	Human
Host:	Rabbit
Isotype:	IgG
Clonality:	Polyclonal
Immunogen:	The immunogen for anti-C15orf40 antibody: synthetic peptide directed towards the middle region of human C15orf40. Synthetic peptide located within the following region: EANAELCRYLSKVLELRKSDVLDKGGKSREKVKLLASTTPEEILEKLK
Formulation:	Liquid. Purified antibody supplied in 1x PBS buffer with 0.09% (w/v) sodium azide and 2% sucrose. <i>Note that this product is shipped as lyophilized powder to China customers.</i>
Concentration:	lot specific
Purification:	Affinity Purified
Conjugation:	Unconjugated
Storage:	Store at -20°C as received.
Stability:	Stable for 12 months from date of receipt.
Predicted Protein Size:	13 kDa
Gene Name:	chromosome 15 open reading frame 40
Database Link:	NP_653198 Entrez Gene 123207 Human Q8WUR7
Background:	The function of the protein remains unknown.
Synonyms:	FLJ33606; MGC29937
Note:	Immunogen Sequence Homology: Dog: 100%; Pig: 100%; Rat: 100%; Horse: 100%; Human: 100%; Mouse: 100%; Bovine: 100%; Rabbit: 100%; Guinea pig: 100%



[View online »](#)

Product images:



WB Suggested Anti-C15orf40 Antibody Titration:
0.2-1 ug/ml; ELISA Titer: 1: 1562500; Positive
Control: Transfected 293T