

## Product datasheet for **TA340331**

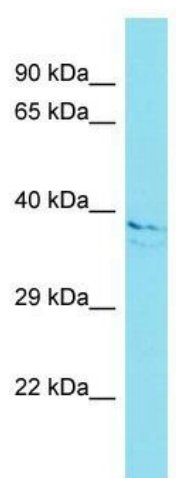
### SLAIN1 Rabbit Polyclonal Antibody

#### Product data:

Product Type:	Primary Antibodies
Applications:	WB
Recommended Dilution:	WB
Reactivity:	Human
Host:	Rabbit
Isotype:	IgG
Clonality:	Polyclonal
Immunogen:	The immunogen for Anti-SLAIN1 antibody is: synthetic peptide directed towards the middle region of Human SLAIN1. Synthetic peptide located within the following region: TCSDQEYDQYSLEDEEFDHLPPPQRLPRCSPFQRGIPHSQTFSSIREC
Formulation:	Liquid. Purified antibody supplied in 1x PBS buffer with 0.09% (w/v) sodium azide and 2% sucrose. <i>Note that this product is shipped as lyophilized powder to China customers.</i>
Concentration:	lot specific
Purification:	Affinity Purified
Conjugation:	Unconjugated
Storage:	Store at -20°C as received.
Stability:	Stable for 12 months from date of receipt.
Predicted Protein Size:	38 kDa
Gene Name:	SLAIN motif family member 1
Database Link:	<a href="#">NP_001035243</a> <a href="#">Entrez Gene 122060 Human Q8ND83</a>
Background:	The function of this protein remains unknown.
Synonyms:	C13orf32
Note:	Immunogen Sequence Homology: Human: 100%; Pig: 93%; Rat: 93%; Mouse: 93%; Rabbit: 93%; Guinea pig: 93%; Dog: 86%; Horse: 86%; Bovine: 86%



[View online »](#)

**Product images:**

Host: Rabbit; Target Name: SLAIN1; Sample Tissue: Esophagus Tumor lysates; Antibody Dilution: 1.0 ug/ml