

Product datasheet for **TA340329**

Rheb1 Rabbit Polyclonal Antibody

Product data:

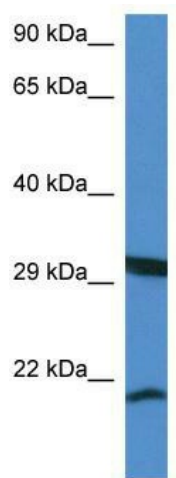
Product Type:	Primary Antibodies
Applications:	WB
Recommended Dilution:	WB
Reactivity:	Mouse
Host:	Rabbit
Isotype:	IgG
Clonality:	Polyclonal
Immunogen:	The immunogen for anti-Rheb1 antibody: synthetic peptide corresponding to a region of Mouse. Synthetic peptide located within the following region: VEGEFLEGYDPTVENTYSKTVTLGKDEFHLHLVDTAGQDEYSILPYSLII
Formulation:	Liquid. Purified antibody supplied in 1x PBS buffer with 0.09% (w/v) sodium azide and 2% sucrose. <i>Note that this product is shipped as lyophilized powder to China customers.</i>
Concentration:	lot specific
Purification:	Affinity Purified
Conjugation:	Unconjugated
Storage:	Store at -20°C as received.
Stability:	Stable for 12 months from date of receipt.
Predicted Protein Size:	20 kDa
Gene Name:	Ras homolog enriched in brain like 1
Database Link:	NP_081243 Entrez Gene 69159 Mouse Q9D8T3
Background:	Rheb1 binds GTP and exhibits intrinsic GTPase activity. It may activate NF-kappa-B-mediated gene transcription. It promotes signal transduction through MTOR, activates RPS6KB1, and is a downstream target of the small GTPase-activating proteins TSC1 and TSC2.
Synonyms:	FLJ25797; MGC34869; Rheb2; RhebL1c



[View online »](#)

Note: Immunogen Sequence Homology: Dog: 100%; Pig: 100%; Rat: 100%; Horse: 100%; Human: 100%; Mouse: 100%; Bovine: 100%; Rabbit: 100%; Guinea pig: 100%; Goat: 83%; Sheep: 83%; Zebrafish: 83%

Product images:



WB Suggested Anti-Rheb1 Antibody; Titration: 1.0 ug/ml; Positive Control: Mouse Kidney