

## Product datasheet for **TA340328**

### **DNAAF8 Rabbit Polyclonal Antibody**

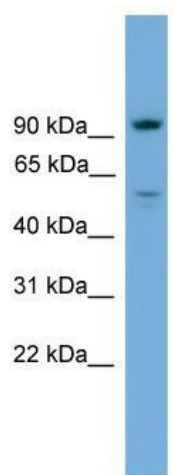
#### **Product data:**

Product Type:	Primary Antibodies
Applications:	WB
Recommended Dilution:	WB
Reactivity:	Human
Host:	Rabbit
Isotype:	IgG
Clonality:	Polyclonal
Immunogen:	The immunogen for anti-C16orf71 antibody: synthetic peptide directed towards the middle region of human C16orf71. Synthetic peptide located within the following region: GKSQLLQQLRAFQKGTAQPELPASKGPAGGRAQAPEDTAGSRTGRKQHMK
Formulation:	Liquid. Purified antibody supplied in 1x PBS buffer with 0.09% (w/v) sodium azide and 2% sucrose. <i>Note that this product is shipped as lyophilized powder to China customers.</i>
Concentration:	lot specific
Purification:	Affinity Purified
Conjugation:	Unconjugated
Storage:	Store at -20°C as received.
Stability:	Stable for 12 months from date of receipt.
Predicted Protein Size:	56 kDa
Gene Name:	chromosome 16 open reading frame 71
Database Link:	<a href="#">NP_631909</a> <a href="#">Entrez Gene 146562 Human</a> <a href="#">Q8IYS4</a>
Background:	The function of C16orf71 remains unknown.
Synonyms:	DKFZp686H2240; FLJ43261
Note:	Immunogen Sequence Homology: Human: 100%; Horse: 93%; Rabbit: 86%



[View online »](#)

## Product images:



WB Suggested Anti-C16orf71 Antibody Titration:  
0.2-1 ug/ml; Positive Control: ACHN cell lysate