

Product datasheet for **TA340325**

STARD4 Rabbit Polyclonal Antibody

Product data:

| | |
|-------------------------|---|
| Product Type: | Primary Antibodies |
| Applications: | WB |
| Recommended Dilution: | WB |
| Reactivity: | Human |
| Host: | Rabbit |
| Isotype: | IgG |
| Clonality: | Polyclonal |
| Immunogen: | The immunogen for anti-STARD4 antibody: synthetic peptide directed towards the middle region of human STARD4. Synthetic peptide located within the following region: CCVMRYTTAGQLWNIISPREFVDFSYTVGYKEGLLSCGISLDWDEKRPEF |
| Formulation: | Liquid. Purified antibody supplied in 1x PBS buffer with 0.09% (w/v) sodium azide and 2% sucrose. <i>Note that this product is shipped as lyophilized powder to China customers.</i> |
| Concentration: | lot specific |
| Purification: | Affinity Purified |
| Conjugation: | Unconjugated |
| Storage: | Store at -20°C as received. |
| Stability: | Stable for 12 months from date of receipt. |
| Predicted Protein Size: | 23 kDa |
| Gene Name: | StAR related lipid transfer domain containing 4 |
| Database Link: | NP_631903 Entrez Gene 134429 Human Q96DR4 |



[View online »](#)

Background:

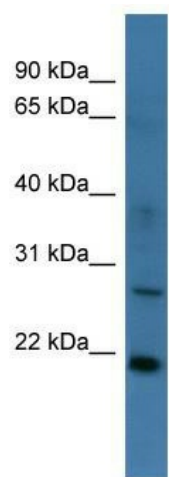
Cholesterol homeostasis is regulated, at least in part, by sterol regulatory element (SRE)-binding proteins (e.g., SREBP1; MIM 184756) and by liver X receptors (e.g., LXRA; MIM 602423). Upon sterol depletion, LXRs are inactive and SREBPs are cleaved, after which they bind promoter SREs and activate genes involved in cholesterol biosynthesis and uptake. Sterol transport is mediated by vesicles or by soluble protein carriers, such as steroidogenic acute regulatory protein (STAR; MIM 600617). STAR is homologous to a family of proteins containing a 200- to 210-amino acid STAR-related lipid transfer (START) domain, including STARD4 (Soccio et al., 2002 [PubMed 12011452]).

Synonyms:

4632419C16Rik; 9030213J02Rik; AA517649; AW324468; StAR-related lipid transfer (START) domain containing 4; StAR-related lipid transfer protein 4

Note:

Immunogen Sequence Homology: Pig: 100%; Rat: 100%; Horse: 100%; Human: 100%; Mouse: 100%; Bovine: 100%; Rabbit: 100%; Zebrafish: 100%; Dog: 93%; Guinea pig: 86%

Product images:

WB Suggested Anti-STARD4 Antibody Titration:
0.2-1 ug/ml; ELISA Titer: 1: 2500; Positive Control:
HepG2 cell lysate