

## Product datasheet for **TA340324**

### FLACC1 Rabbit Polyclonal Antibody

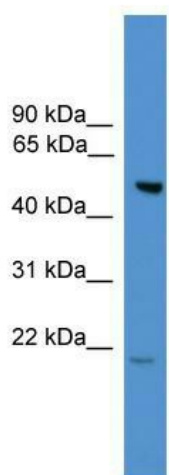
#### Product data:

Product Type:	Primary Antibodies
Applications:	WB
Recommended Dilution:	WB
Reactivity:	Human
Host:	Rabbit
Isotype:	IgG
Clonality:	Polyclonal
Immunogen:	The immunogen for anti-ALS2CR12 antibody: synthetic peptide directed towards the N terminal of human ALS2CR12. Synthetic peptide located within the following region: RWESEIPDKGRFSRTNIISDLEEQISELTAIIEQMNRDHQSAQKLLSSEM
Formulation:	Liquid. Purified antibody supplied in 1x PBS buffer with 0.09% (w/v) sodium azide and 2% sucrose. <i>Note that this product is shipped as lyophilized powder to China customers.</i>
Concentration:	lot specific
Purification:	Affinity Purified
Conjugation:	Unconjugated
Storage:	Store at -20°C as received.
Stability:	Stable for 12 months from date of receipt.
Predicted Protein Size:	52 kDa
Gene Name:	amyotrophic lateral sclerosis 2 chromosome region candidate 12
Database Link:	<a href="#">NP_631902</a> <a href="#">Entrez Gene 130540 Human</a> <a href="#">Q96Q35</a>
Background:	The exact function of ALS2CR12 remains unknown.
Synonyms:	amyotrophic lateral sclerosis 2 (juvenile) chromosome region; candidate 12
Note:	Immunogen Sequence Homology: Human: 100%



[View online »](#)

## Product images:



WB Suggested Anti-ALS2CR12 Antibody Titration:  
0.2-1 ug/ml; ELISA Titer: 1: 1562500; Positive  
Control: A549 cell lysate